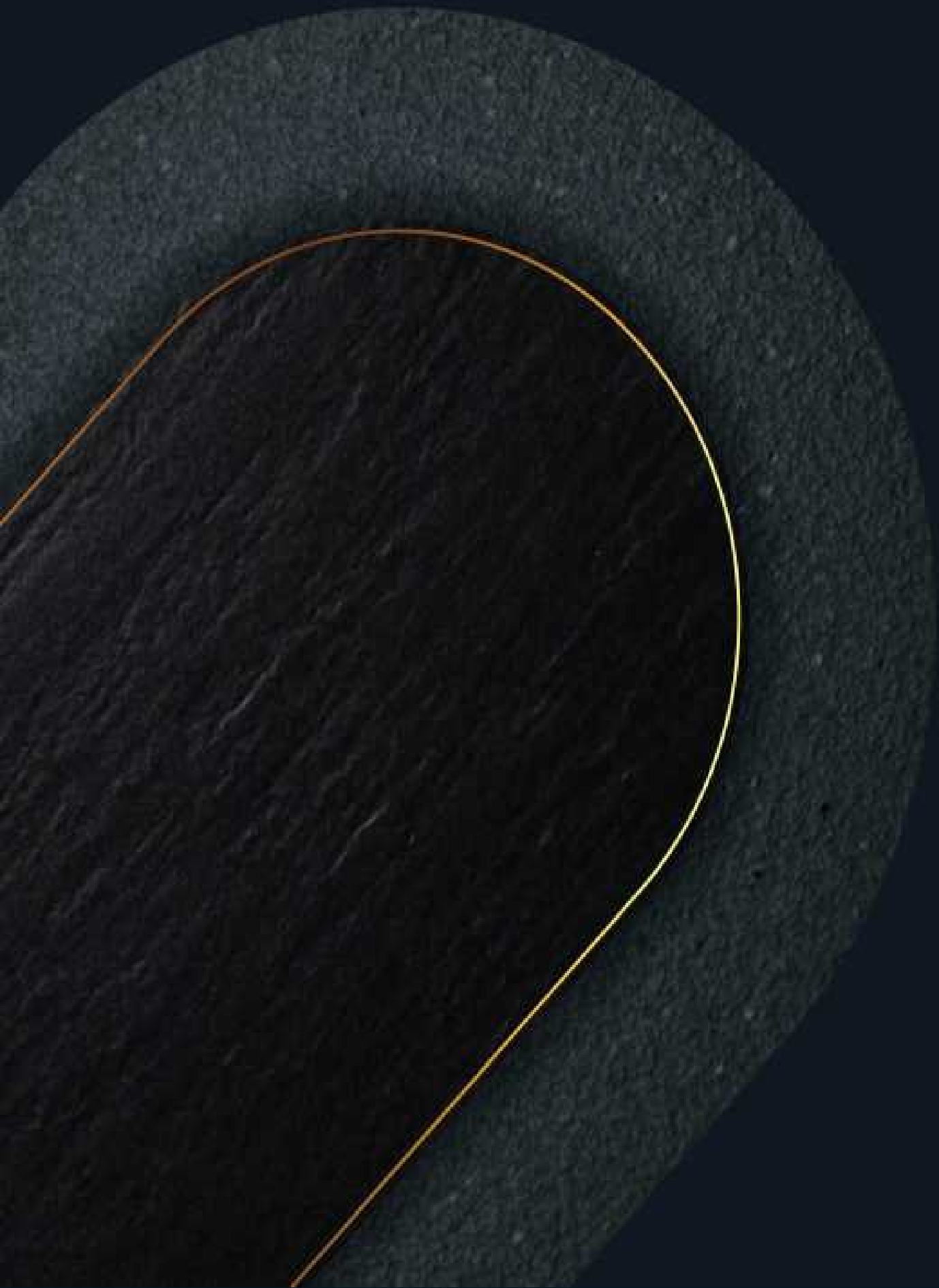


AESTHETICS & DETAILS



KLAX
凯莱仕|岩板

Authentic Modern Aesthetics

原生现代设计美学

Modern- Classic Convergence

现代与经典融合

Art & Technology Integration

艺术与技术结合

KLAX, part of KITO Ceramics Group
thankyou@kito.cn
www.kitoceramics.com

SURFACES 质感



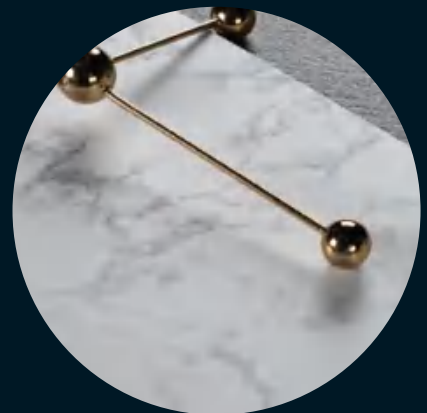
肌理面

近一半的岩板产品均采用行业先进的3D模具刻画出逼真的大自然纹理，表面凹凸细腻、触感超然，强调产品的独特纹理和精湛工艺，赋予空间另类美感。



亮光面

3D喷墨叠加干粒全抛技术，表面奢华高贵，宛如一件高级的艺术品，视觉上能增加空间延伸性。



丝绒面

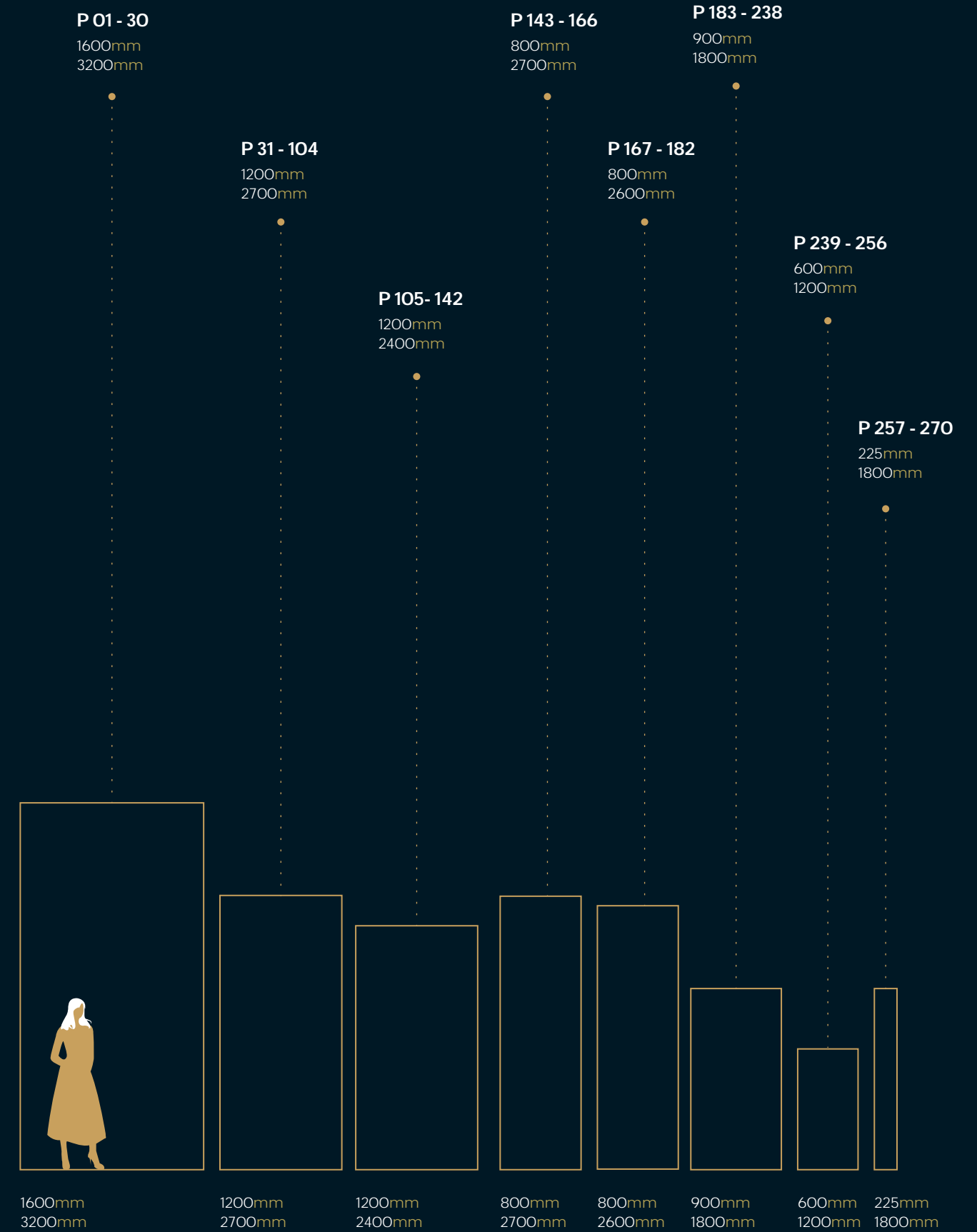
丝绒面产品表面采用丝绒釉料，经过严格温度控制后生产成具有婴儿般的亲肤柔滑质感。由于表面柔滑细腻，该类岩板适用于与人体日常接触较多的台面区域。日常清理工作也极为简单，只需用干净湿布擦拭桌面，即可保持清洁，与市面上普通岩板台面和其它板材有明显的区别。



星钻面

本是一种价格不菲的岩板釉料，经过特殊的施釉工序，和1200℃高温烧结，奢钻般细微的颗粒均匀分布于板面，在灯光照射下，有种“灿若星辰大海”的效果。钻光熠熠生辉，触感精致细腻，有如碎钻滚动，表面凹凸效果明显。明丽、耀目、恣意闪耀，故名“星钻面”。磨碎钻石，来装点家居的墙壁、地面和台面。艺术的领域，从无上限，“星钻面”由KLAX领衔研发制造，以超凡工艺开启超感意象之旅。

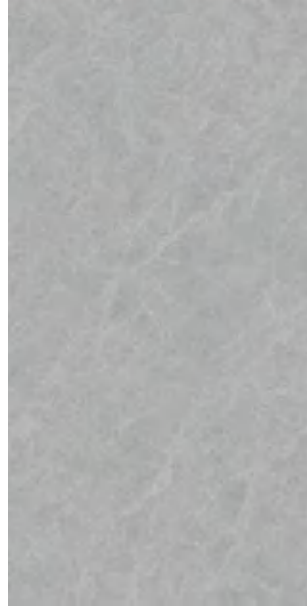
SIZE / FORMAT 岩板规格



1600*3200*12
COLLECTION



兰杜拉灰
LANDULA GREY
X3216J1187ASR



厄尔巴灰
ELBA GREY
X3216J1188ASR



冰川印象
CALACATTA
PREZIOSO EXTRA
X3216J1202AR-1/3



波士顿灰
BOSTON GREY
X3216J1189ASR



埃德黑
AGED BLACK
X3216J1201AS

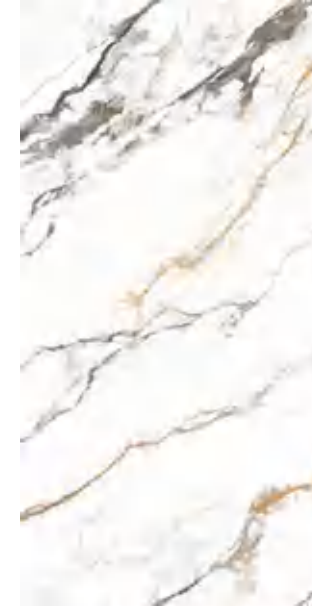


西西里黑
LAVA SICILIAN
X3216J1107AS

1600*3200*6
COLLECTION



澳洲砂岩
AUSTRALIAN
SANDSTONE
X3216S1236ASR



流金岁月
ELEGANT WHITE
X3216S1231YSN-1/3



顶级鱼肚白
CALACATTA
WHITE EXTRA
X3216S1253YS-1/6



撒丁顽石
BRECCIA
SARDA GREY
X3216S1226YS-1/3



卡斯贝克
KAZBEGI
X3216S1235YSN-1/6



顶级雪花白
STATUARIO
EXTRA
X3216S1232YSN-1/3



萨克森
SAXON
X3216S1237YSN



萨克森
SAXON
X3216S1238YSN

P03

www.klaxslab.com

ELBA GREY

The elegant and neutral grey tones are perfectly balanced. The marble veins are not ostentatious or dominant, but rather adhere to the style, playing different roles in style depending on the lighting.

厄尔巴灰

优雅的中性灰调不偏不倚，大理石纹理并不华丽显要，而是服从于格调，在不同的光线中扮演不同的风格角色。

MARBLE LOOK

大理石系列

X3216J1188ASR

FORMAT
规格尺寸 /
1600mm
3200mm

THICKNESS
厚度 /
12mm

SURFACE
表面质感 /
DIGITAL
STRUCTURE
CRYSTAL
星钻面

BODY 坯色 /
LIGHT GREY
浅灰

FACES 版面 /
3 RANDOM
3 随机面

MARBLE LOOK

大理石系列

X3216J1202AR-1/3

FORMAT
规格尺寸 /
1600mm
3200mm

THICKNESS
厚度 /
12mm

SURFACE
表面质感 /
DIGITAL
STRUCTURE
HONED
丝绒面

BODY 坯色 /
WHITE 白

FACES 版面 /
3 SEAMLESS
MULTI-DIRECTIONAL
3 片一组万向连纹

P04

www.klaxslab.com

CALACATTA PREZIOSO EXTRA

Multi-layered grey marble veins on top of a snowy white base, restoring the natural breath and dynamic scenery of pure polar glaciers. It brings a romantic and natural serenity to living spaces by creating peacefulness and tranquility.

冰川印象

将多层次灰调大理石纹泼洒于雪白底色之上，还原极地冰川纯净的天然气息与动态景观，浪漫自然、低调雅致，为家居空间带来一室静谧。

P05

www.klaxslab.com

BOSTON GREY

Presenting the delicate and subtle effect of cement in a soft and elegant greige tone. The design embodies the essence of modern simplicity, bringing a refined and artistic touch to any living space. Its versatility and timelessness make it a classic choice for those who seek a return to the basics in a precise and artistic way.

波士顿灰

将淡雅的米灰色水泥的表现效果制作作为岩板产品，现代居室的返璞归真，以精确而艺术的方式得以落实，穿越时间，百搭经典。

CEMENT LOOK

水泥系列

X3216J1189ASR

FORMAT
规格尺寸 /
1600mm
3200mm

THICKNESS
厚度 /
12mm

SURFACE
表面质感 /
DIGITAL
STRUCTURE
CRYSTAL
星钻面

BODY 坯色 /
LIGHT GREY
浅灰

FACES 版面 /
3 RANDOM
3 随机面

P06

www.klaxslab.com



STONE LOOK

岩石系列

X3216J1201AS

FORMAT
规格尺寸 /
1600mm
3200mm

THICKNESS
厚度 /
12mm

SURFACE
表面质感 /
DIGITAL
STRUCTURE
CRYSTAL
肌理面

BODY 坯色 /
BLACK 黑

FACES 版面 /
SINGLE 单面

AGED BLACK

Inspired by volcanic rocks rich in metallic luster that exudes a deep, atmospheric black surface with countless intricate and textured details. Its visual simplicity is elegant while its unique color and texture display multiple facets under different lighting conditions.

埃德黑

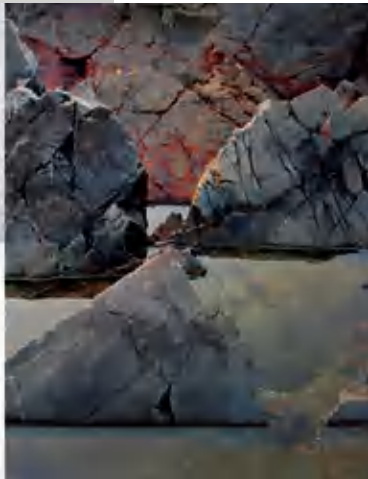
富含金属光泽粒子的火山岩，深沉大气的黑色表面蕴含无数凹凸有致的肌理细节，视觉简练素雅并颇具力量感，独特色泽质感可令其在不同的光线下呈现多面风采。





AGED BLACK

埃德黑



STONE LOOK

岩石系列

X3216J1201AS

FORMAT
规格尺寸 /
1600mm
3200mm

THICKNESS
厚度 /
12mm

SURFACE
表面质感 /
DIGITAL
STRUCTURE
CRYSTAL
肌理面

BODY 坯色 /
BLACK 黑

FACES 版面 /
SINGLE 单面

LAVA SICILIAN

Presenting a unique Italian style by using black artistic cement. Its simplicity can be appreciated in a noble way that applies the Italian minimalistic aesthetic in the pursuit of artistic lifestyle.

西西里黑

将水泥用黑色艺术的方式呈现出独有的意式风情。简约却可琢磨，质朴却高贵，以意式的极简美学和追求艺术体验的生活方式浓缩应用于这款岩板产品的设计中。

CEMENT LOOK

水泥系列

X3216J1107AS

FORMAT
规格尺寸 /
1600mm
3200mm

THICKNESS
厚度 /
12mm

SURFACE
表面质感 /
DIGITAL
STRUCTURE
MATT
肌理面

BODY 坯色 /
BLACK 黑

FACES 版面 /
SINGLE 单面



CEMENT LOOK

水泥系列

X3216J1187ASR

FORMAT
规格尺寸 /
1600mm
3200mm

THICKNESS
厚度 /
12mm

SURFACE
表面质感 /
DIGITAL
STRUCTURE
CRYSTAL
星钻面

BODY 坯色 /
LIGHT GREY
浅灰

FACES 版面 /
3 RANDOM
3 随机面

LANDULA GREY

Embodies a composite material of cement and sandstone, presented in a tranquil shade of medium grey. With vivid and avant-garde texture, its design is both versatile and impressive.

兰杜拉灰

以平和的中灰色调演绎了水泥与砂岩的复合材质表现，肌理生动而前卫，设计百搭又出彩。



P13

www.klaxslab.com

ELEGANT WHITE

Featuring a warm and translucent jade texture with intertwining and smooth golden-grey veins. Its versatile continuous vein design extends freely in space.

流金岁月

肌理玉底温润通透，金灰纹路交错通畅，万向连纹设计在空间中写意延展，诞生出蓝田日暖玉生烟的意境。

MARBLE LOOK

大理石系列

X3216S1231YSN-1/3

FORMAT

规格尺寸 /
1600mm
3200mm

THICKNESS

厚度 /
6mm

SURFACE

表面质感 /
REALISTIC
MATT
肌理面

BODY 坯色 /

WHITE 白

FACES 版面 /

3 SEAMLESS
MULTI-DIRECTIONAL
3片一组万向连纹

P14

www.klaxslab.com

STATUARIO EXTRA

Vividly reproduced and capturing its noble and aloof temperament. The super-white glazed surface is gentle and tranquil, while the grey branch web pattern resembles pure snowflakes softly gliding through mountain streams. The versatile continuous grain design creates a large-scale landscape, crafting a beautiful and artistic space.

顶级雪花白

生动复刻了顶级雪花白大理石高贵孤傲的气质，超白釉面温润静谧，灰色枝网花纹如纯净雪花在山涧轻柔滑过，万向连纹设计延伸构建出超大幅山水画屏，铸就唯美写意空间。

MARBLE LOOK

大理石系列

X3216S1232YSN-1/3

FORMAT

规格尺寸 /
1600mm
3200mm

THICKNESS

厚度 /
6mm

SURFACE

表面质感 /
REALISTIC
MATT
肌理面

BODY 坯色 /

WHITE 白

FACES 版面 /

3 SEAMLESS
MULTI-DIRECTIONAL
3片一组万向连纹



**ELEGANT
WHITE**

流金岁月



**MARBLE
LOOK**

大理石系列

X3216S1231YSN-1/3

FORMAT
规格尺寸 /
1600mm
3200mm

THICKNESS
厚度 /
6mm

SURFACE
表面质感 /
REALISTIC
MATT
肌理面

BODY 坯色 /
WHITE 白

FACES 版面 /
3 SEAMLESS
MULTI-DIRECTIONAL
3片一组万向连纹



**STATUARIO
EXTRA**

顶级雪花白



**MARBLE
LOOK**

大理石系列

X3216S1232YSN-1/3

FORMAT

规格尺寸 /
1600mm
3200mm

THICKNESS

厚度 /
6mm

SURFACE

表面质感 /
REALISTIC
MATT
肌理面

BODY 坯色 /

WHITE 白

FACES 版面 /

3 SEAMLESS
MULTI-DIRECTIONAL
3片一组万向连纹

P19

www.klaxslab.com

KAZBEGI

Inspired by the surrounding Caucasus Mountains of the small town of Kasbek in Georgia, with 6 continuous pieces design brings theCaucasian style into the space.

卡斯贝克

灵感来自于格鲁吉亚边境的小镇卡斯贝克，环绕小镇的高加索山脉在阳光下形成蓝灰与白金交相辉映的漂亮画面，经由左右连纹设计将这个美妙的画面创作于岩板表面，将磅礴雄壮的高加索风情带入室内空间。

MARBLE LOOK

大理石系列

X3216S1235YSN-1/6

FORMAT
规格尺寸 /
1600mm
3200mm

THICKNESS
厚度 /
6mm

SURFACE
表面质感 /
REALISTIC
MATT
肌理面

BODY 坯色 /
LIGHT GREY
浅灰

FACES 版面 /
6 CONTINUOUS
6片一组左右连纹

MARBLE LOOK

大理石系列

X3216S1226YS-1/3

FORMAT
规格尺寸 /
1600mm
3200mm

THICKNESS
厚度 /
6mm

SURFACE
表面质感 /
REALISTIC
MATT
肌理面

BODY 坯色 /
LIGHT GREY
浅灰

FACES 版面 /
3 CONTINUOUS
3片一组万向连纹

BRECCIA SARDA GREY

The inspiration comes from the pattern of Sardinian pebbles, with a gradient of brown color to create a luxury feel. The smooth surface and unique texture formed by the long-term erosion of the rivers and the design of the universal continuous pattern maximize the decorative effect, creating an irreplicable indoor landscape.

撒丁硕石

灵感来自于撒丁硕石纹，渐变棕色透出轻奢感，经由大江大河长期冲刷形成的圆润表面和独特纹理，再经由万向连纹设计形成最大化的装饰效果，形成一道不可复刻的室内风景。

P20

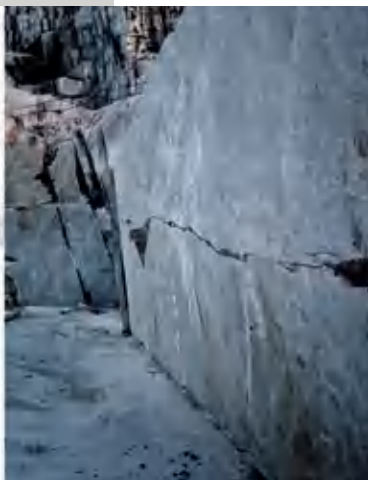
www.klaxslab.com





KAZBEGI

卡斯贝克



MARBLE LOOK 大理石系列

X3216S1235YSN-1/6

FORMAT
规格尺寸 /
1600mm
3200mm

THICKNESS
厚度 /
6mm

SURFACE
表面质感 /
REALISTIC
MATT
肌理面

BODY 坯色 /
LIGHT GREY
浅灰

FACES 版面 /
6 CONTINUOUS
6片一组左右连纹



**BRECCIA
SARDA GREY**

撒丁硕石



**MARBLE
LOOK**

大理石系列

X3216S1226YS-1/3

FORMAT
规格尺寸 /
1600mm
3200mm

THICKNESS
厚度 /
6mm

SURFACE
表面质感 /
REALISTIC
MATT
肌理面

BODY 坯色 /
LIGHT GREY
浅灰

FACES 版面 /
3 CONTINUOUS
3片一组万向连纹

P25

www.klaxslab.com

SAXON

Interprets the natural texture of sandstone to the fullest. The elegant surface incorporates a crisscrossed stone texture, showing the unique flavor and decorative taste of natural stone in multiple layers.

萨克森

将天然形成的砂岩质感演绎得淋漓尽致。优雅米灰表层纳入纵横交错的石材纹理，多层次展现天然石材的独特风味与装饰品位。

STONE LOOK

岩石系列

X3216S1237YSN

FORMAT
规格尺寸 /
1600mm
3200mm

THICKNESS
厚度 /
6mm

SURFACE
表面质感 /
REALISTIC
MATT
肌理面

BODY 坯色 /
LIGHT GREY
浅灰

FACES 版面 /
SINGLE 单面



P26

www.klaxslab.com



STONE LOOK

岩石系列

X3216S1238YSN

FORMAT
规格尺寸 /
1600mm
3200mm

THICKNESS
厚度 /
6mm

SURFACE
表面质感 /
REALISTIC
MATT
肌理面

BODY 坯色 /
LIGHT GREY
浅灰

FACES 版面 /
SINGLE 单面

SAXON

Interprets the natural sandstone texture. The elegant silver-gray surface incorporates the crisscrossed stone texture, presenting a rich sense of texture while maintaining a harmonious nature, making it a stylish and fashionable choice.

萨克森

将天然形成的砂岩质感演绎得淋漓尽致。时尚银灰色调中加入纵横交错的石材纹理，呈现丰富的肌理感却不失整体调性的和谐自然。

AUSTRALIAN SANDSTONE

Inspiration from the delicate texture and pleasing color of beige sandstone. Its unique texture offers a warm and soothing visual experience and a natural tactile enjoyment, making one feel like being in a seaside resort with clear water and white sand.

澳洲砂岩

灵感来自于纹理细腻、色泽怡人的米色砂岩，别具一格的质感予人温暖舒缓的视觉感受和贴近自然的触感享受，让人仿佛置身于水清沙白的海滨度假圣地。

STONE LOOK

岩石系列

X3216S1236ASR

FORMAT
规格尺寸 /
1600mm
3200mm

THICKNESS
厚度 /
6mm

SURFACE
表面质感 /
DIGITAL
STRUCTURE
CRYSTAL
肌理面

BODY 坯色 /
WHITE 白

FACES 版面 /
SINGLE 单面

MARBLE LOOK

大理石系列

X3216S1253YS-1/6

FORMAT
规格尺寸 /
1600mm
3200mm

THICKNESS
厚度 /
6mm

SURFACE
表面质感 /
REALISTIC
MATT
肌理面

BODY 坯色 /
WHITE 白

FACES 版面 /
6 CONTINUOUS
6片一组连纹

CALACATTA WHITE EXTRA

Inspired by Italy's top-grade Fish Belly White marble, with a super white glazed surface that is warm and quiet, and irregularly distributed light gray veins.

顶级鱼肚白

来源于意大利顶级鱼肚白大理石，超白釉面温润静谧，浅灰色纹理不规则分布，左右连纹设计构建更为辽阔的视觉，让空间更显无拘无束的艺术气质。



清杏色
KLAXICEM
PALE ALMOND
X2712S1117ASR



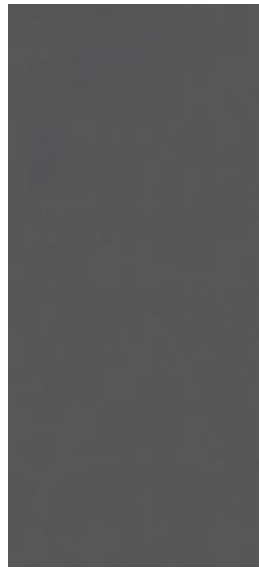
烟灰褐
KLAXICEM
SMOCKY TAUPE
X2712S1118ASR



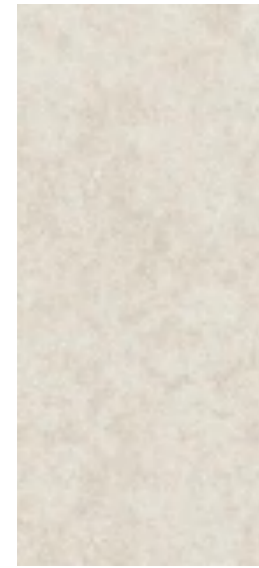
海豹灰
KLAXICEM
SEAL GREY
X2712S1119ASR



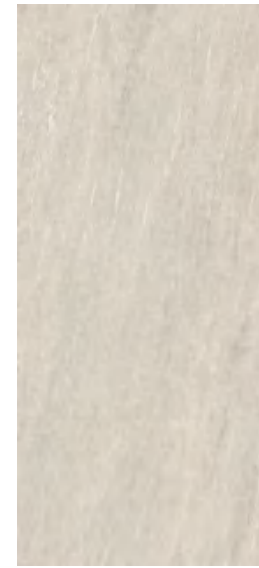
铁锚灰
KLAXICEM
ANCHOR GREY
X2712S1120ASR



木炭灰
KLAXICEM
CHARCOAL GREY
X2712S1121ASR



叶蜡石
PIETRA DI
GERUSALEMME
X2712S0016AS



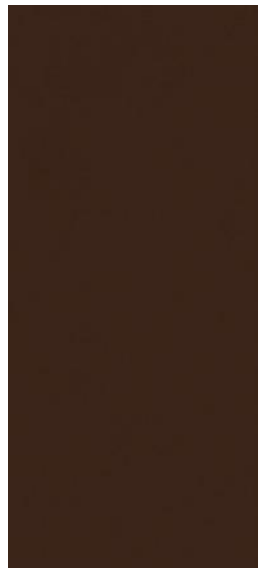
瓦尔斯米黄
PIETRA
DI VALS BEIGE
X2712S0036AS



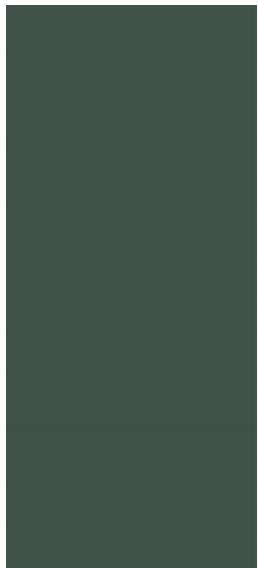
宝缇嘉米黄
BOTTEGA BEIGE
X2712S0033AS



宝缇嘉灰
BOTTEGA GREY
X2712S0034AS



赤褐色
KLAXICEM
REDDISH MAHOGANY
X2712S1122ASR



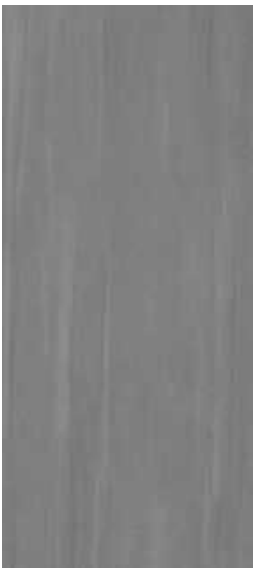
森林绿
KLAXICEM
FOREST GREEN
X2712S1123ASR



青灰平纹
OASIS GREY
X2712S0040AS



科恩白
COAN WHITE
X2712S1112AV



科恩灰
COAN GREY
X2712S1113AV



罗马洞石
ROMA TRAVERTINE
X2712S1270YSN



罗马洞石
ROMA TRAVERTINE
X2712S1271YSN



水磨灰
TERRAZZO GREY
X2712S1272YSN



水磨黄
TERRAZZO BEIGE
X2712S1273YSN



科恩蓝
COAN SAPHIRE
X2712S1114AV



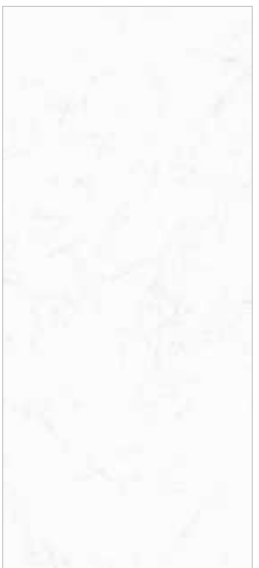
阿尔科斯白
ARKOSE
IVORY
X2712S1115ASR



阿尔科斯灰
ARKOSE GREY
X2712S1116ASR



褶皱灰
CRUMPLED
GREY
X2712S1111AS



冰晶白
ICE
X2712S8383AS



莫奈花园
MONET GARDEN
X2712S1287AEH



棱镜空间
PRISM
X2712S1288AEH

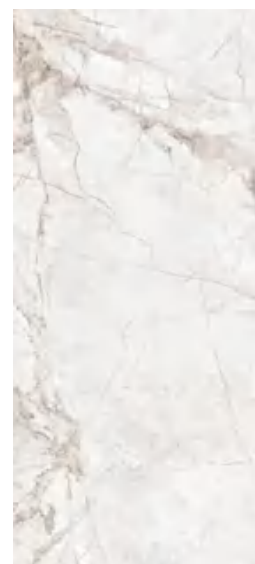
1200mm
2700mm



纳维亚
NAEVIA WHITE
X2712S1224YS-1/3



奥兰卡
OULANKA
BEIGE
X2712S1217YD



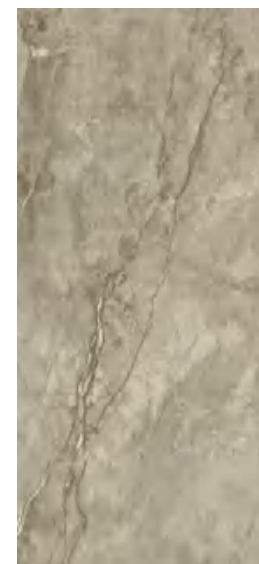
寒江雪
NEVE FREDDA
WHITE
X2712S1216YD



普洛斯
PULLOS
X2712S1220YD-1/3



卡拉拉金
CALACATTA ROYAL
X2712S1274YSR-1/2



佛罗伦萨灰
FLORENCE
GREY
X2712S0074AG-1/3



阿尔卑斯白
WHITE
ALPINUS
GRANITE
X2712S0061AG



美杜莎
SILK ROAD
X2712S0063AG-1/3



捷特黑
BLACK
AGATE JET MARBLE
X2712S0065AG



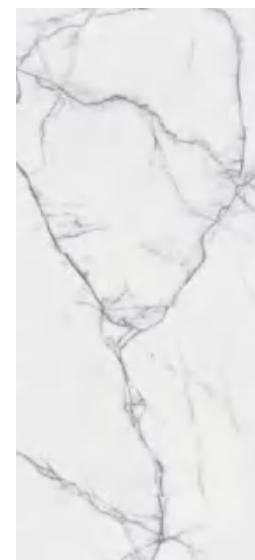
黑金木化石
BOSPHORUS
GOLD
X2712S0085AG-1/3



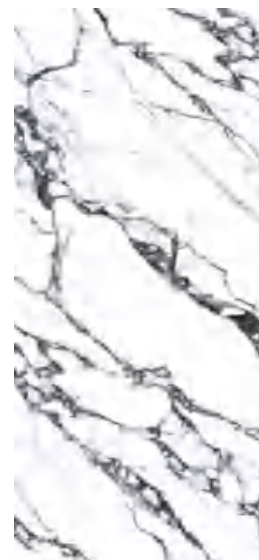
卡拉卡塔白
CALACATTA
PALACE WHITE
X2712S0001AR-1/3



卡拉卡塔绿
KARAKATA DREEN
X2712S1275YSR-1/2



香雪梅
CALACATTA NEVE
X2712S1276YSR-1/2



宝格丽黑
BULGARIA GREY
X2712S1281YSR-1/2



保加利亚灰
BULGARIA GREY
X2712S1278YSR



拿破仑黑
NAPOLEON BLACK
X2712S1279YSR

1200mm
2700mm



KLAXICEM FOREST GREEN

The lush green Nordic forest bestows upon Scandinavian wood a unique visual style, infusing the space with a natural and comforting sense of breath, and fostering a warm and inviting atmosphere where every day feels like a holiday.

森林绿

郁郁葱葱的北欧森林作为基调，赋予斯堪的纳维亚木质的独特观感，为空间带入自然舒畅的灵呼吸感，创造出日常假日的温馨氛围。

COLOUR LOOK

色彩系列

X2712S1123ASR

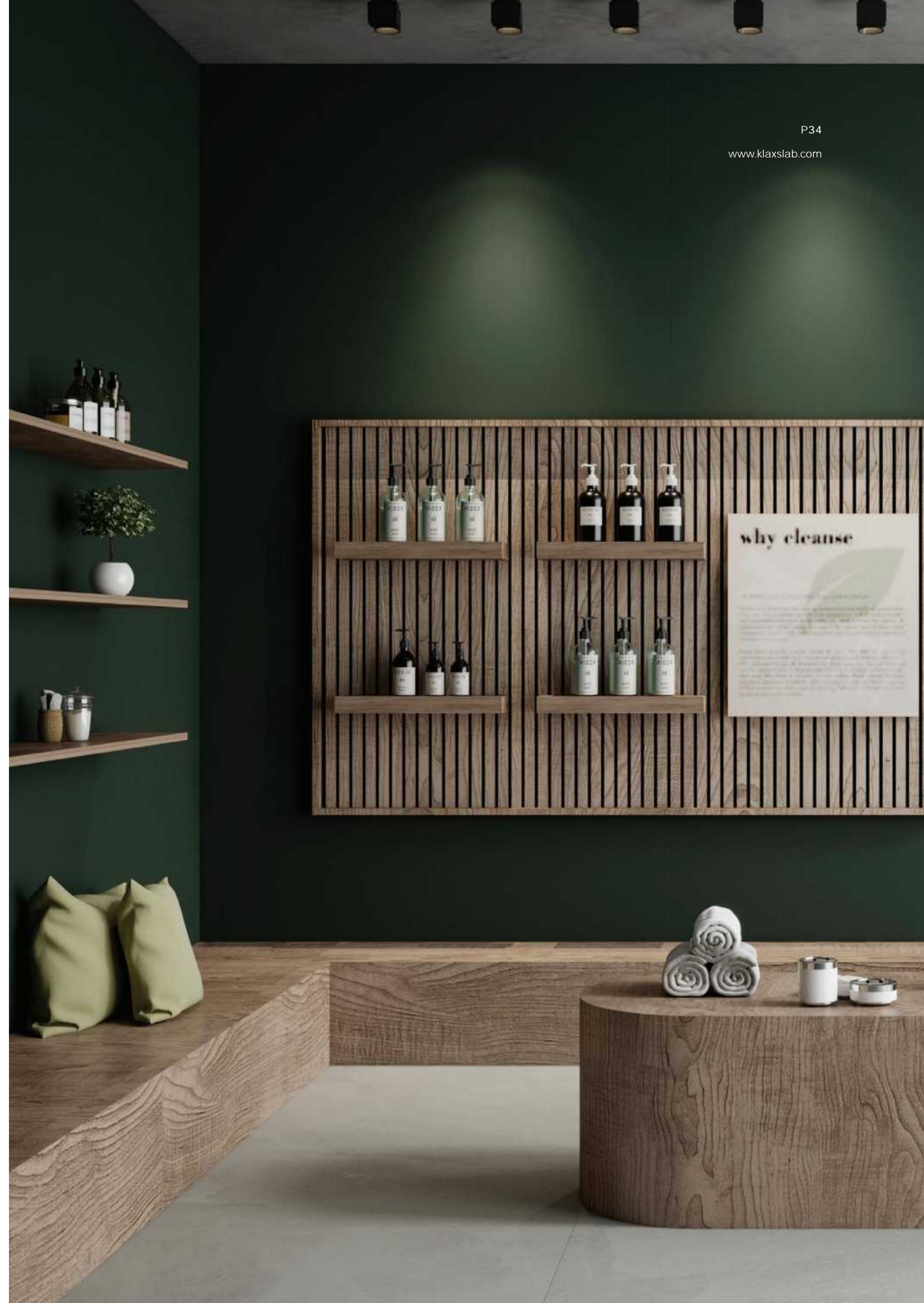
FORMAT
规格尺寸 /
1200mm
2700mm

THICKNESS
厚度 /
6mm

SURFACE
表面质感 /
DIGITAL
STRUCTURE
CRYSTAL
星钻面

BODY 坯色 /
GREY 中灰

FACES 版面 /
3 RANDOM
3 随机面



KLAXICEM PALE ALMOND

Light beige is a pure base color for all space decoration, and it is born to match designs of different styles. It serves as both a quality foundation and a color-matching partner with high aesthetic value.

清杏色

浅米色是一切空间装饰的纯净基底，它为各种不同格调的设计搭配而生，既是品质担当，又是颜值伴侣。

COLOUR LOOK

色彩系列

X2712S1117ASR

FORMAT
规格尺寸 /
1200mm
2700mm

THICKNESS
厚度 /
6mm

SURFACE
表面质感 /
DIGITAL
STRUCTURE
CRYSTAL
星钻面

BODY 坯色 /
WHITE 白

FACES 版面 /
3 RANDOM
3 随机面



COLOUR LOOK

色彩系列

X2712S1118ASR

FORMAT
规格尺寸 /
1200mm
2700mm

THICKNESS
厚度 /
6mm

SURFACE
表面质感 /
DIGITAL
STRUCTURE
CRYSTAL
星钻面

BODY 坯色 /
LIGHT GREY
浅灰

FACES 版面 /
3 RANDOM
3 随机面



KLAXICEM SMOCKY TAUPE

Taupe neutralizing the tone of the environment and provide a visual temperature for the space. The appropriate shade of Taupe is gentle and elegant, and it can be paired with more decorative materials to enhance the visual richness of the space.

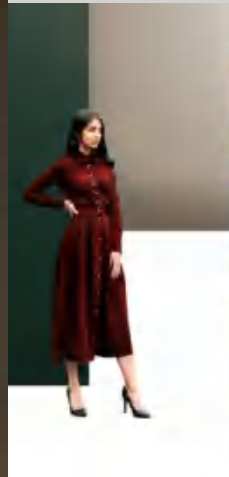
烟灰褐

以米咖色中和环境色调，为空间提供适宜的视觉温度，浓淡相宜的米咖色既温和娴雅，又可以搭配更富装饰性的材质提高视觉浓度，具有十足的可塑性。



**KLAXICEM
SMOCKY
TAUPE**

烟灰褐



**COLOUR
LOOK**

色彩系列

X2712S1118ASR

FORMAT
规格尺寸 /
1200mm
2700mm

THICKNESS
厚度 /
6mm

SURFACE
表面质感 /
DIGITAL
STRUCTURE
CRYSTAL
星钻面

BODY 坯色 /
LIGHT GREY
浅灰

FACES 版面 /
3 RANDOM
3 随机面

KLAXICEM REDDISH MAHOGANY

Incorporating a touch of rich wine red into the deep and intense coffee tone capturing light and shadow dynamics in space, full of charm and romance.

赤褐色

在深沉浓郁的咖啡色调中融入几分醇厚葡萄酒红，在空间中捕捉光影动态，韵味十足，浪漫迷人。

COLOUR LOOK

色彩系列

X2712S1122ASR

FORMAT
规格尺寸 /
1200mm
2700mm

THICKNESS
厚度 /
6mm

SURFACE
表面质感 /
DIGITAL
STRUCTURE
CRYSTAL
星钻面

BODY 坯色 /
GREY 中灰

FACES 版面 /
3 RANDOM
3 随机面



COLOUR LOOK

色彩系列

X2712S1119ASR

FORMAT
规格尺寸 /
1200mm
2700mm

THICKNESS
厚度 /
6mm

SURFACE
表面质感 /
DIGITAL
STRUCTURE
CRYSTAL
星钻面

BODY 坯色 /
LIGHT GREY
浅灰

FACES 版面 /
3 RANDOM
3 随机面

KLAXICEM SEAL GREY

The smooth gray surface, minimalistic yet not boring or dull at all.

海豹灰

柔滑的深灰色板面，纯净色泽中夹杂细小空洞设计，极简却丝毫不感单调。

KLAXICEM ANCHOR GREY

Smooth and moderately grayish surface with moderate levels in between light and dark, practical and versatile, with a neutral temperament that can match any style.

铁锚灰

平滑的中度灰色版面，明暗适度，实用百搭，中性气质不挑风格。

COLOUR LOOK

色彩系列

X2712S1120ASR

FORMAT
规格尺寸 /
1200mm
2700mm

THICKNESS
厚度 /
6mm

SURFACE
表面质感 /
DIGITAL
STRUCTURE
CRYSTAL
星钻面

BODY 坯色 /
LIGHT GREY
浅灰

FACES 版面 /
3 RANDOM
3 随机面



COLOUR LOOK

色彩系列

X2712S1121ASR

FORMAT
规格尺寸 /
1200mm
2700mm

THICKNESS
厚度 /
6mm

SURFACE
表面质感 /
DIGITAL
STRUCTURE
CRYSTAL
星钻面

BODY 坯色 /
GREY 中灰

FACES 版面 /
3 RANDOM
3 随机面

KLAXICEM CHARCOAL GREY

This smooth light gray surface exudes an effortless elegance while remaining practical, effortlessly satisfying both functional and aesthetic requirements of any space it's paired with.

木炭灰

提供光滑的浅灰色版面，轻松却不显轻佻，无惧满足不同功能、不同审美的空间搭配需求。



OASIS GREY

Drawing inspiration from the blue-grey Taft silk wall fabric, a plain weave fabric has been crafted with a serene and pleasant Eastern temperament. The countless folds add a delicate touch, imbuing the material with exquisite connotation. The end result is a unique spatial atmosphere that effortlessly balances intricate details with a soothing ambience.

青灰平纹

以青灰色塔夫绸壁布为灵感来源，素色平纹织造出娴静怡人的东方气质，绸缎质感表面揉入的万千褶皱更添精致内涵，呈现出浓妆淡抹总相宜的独特空间氛围。

WALL PAPER LOOK

壁纸系列

X2712S0040AS

FORMAT
规格尺寸 /
1200mm
2700mm

THICKNESS
厚度 /
6mm

SURFACE
表面质感 /
DIGITAL
STRUCTURE
MATT
肌理面

BODY 坯色 /
WHITE 白

FACES 版面 /
SINGLE 单面

WALL PAPER LOOK

壁纸系列

X2712S1114AV

FORMAT
规格尺寸 /
1200mm
2700mm

THICKNESS
厚度 /
6mm

SURFACE
表面质感 /
DIGITAL
STRUCTURE
MATT
肌理面

BODY 坯色 /
LIGHT GREY
浅灰

FACES 版面 /
3 RANDOM
3 随机面

COAN SAPHIRE

Inspired by blue wall fabric, the intricate fabric patterns and delicate whitewashing techniques create a refined and sophisticated aesthetic. The carefully chosen shade of blue, with its moderate saturation, infuses any living space with a vacation-like ambience, reminiscent of stunning mountain ranges or idyllic islands.

科恩蓝

以蓝色壁布为材质的灵感来源，连细小的织物纹路与微妙的刷白工艺都细腻呈现，适度饱和的精选蓝色为居室空间引入来自壮美山川或旖旎海岛的度假风情。





COAN WHITE

Inspired by the delicate fabric patterns and subtle whitewashing techniques are skillfully crafted, resulting in a refined and pure white aesthetic that adds just the right amount of scholarly atmosphere to any living space.

科恩白

以白色壁布为材质的灵感来源，连细小的织物纹路与微妙的刷白工艺都细腻呈现，细腻正白为居室空间增添恰到好处的书卷气息。

WALL PAPER LOOK

壁纸系列

X2712SI112AV

FORMAT
规格尺寸 /
1200mm
2700mm

THICKNESS
厚度 /
6mm

SURFACE
表面质感 /
CARVING
GLAZE
MATT
肌理面

BODY 坯色 /
WHITE 白

FACES 版面 /
3 RANDOM
3 随机面





**COAN
GREY**

科恩灰



**WALL
PAPER
LOOK**

壁纸系列

X2712S1113AV

FORMAT

规格尺寸 /
1200mm
2700mm

THICKNESS

厚度 /
6mm

SURFACE

表面质感 /
CARVING
GLAZE
MATT
肌理面

BODY 坯色 /

LIGHT GREY
浅灰

FACES 版面 /

3 RANDOM
3 随机面

COAN GREY

This design draws inspiration from the texture of gray wall fabric, where even the minutest fabric details and subtle whitening techniques are presented with great delicacy. The warm gray hue creates a welcoming ambiance while also adding a hint of mystery to the living space, making it a perfect choice for those seeking a cozy yet enigmatic interior.

科恩灰

以灰色壁布为材质的灵感来源，连细小的织物纹路与微妙的刷白工艺都细腻呈现，温暖灰调不仅宜居，更为居室空间增添几分神秘感。

WALL PAPER LOOK

壁纸系列

X2712S1113AV

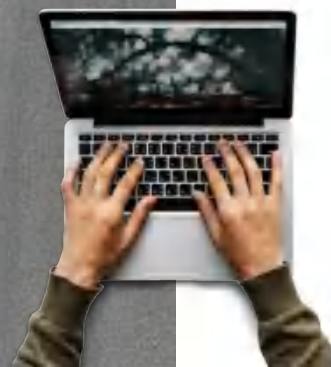
FORMAT
规格尺寸 /
1200mm
2700mm

THICKNESS
厚度 /
6mm

SURFACE
表面质感 /
CARVING
GLAZE
MATT
肌理面

BODY 坯色 /
LIGHT GREY
浅灰

FACES 版面 /
3 RANDOM
3 随机面



WALL PAPER LOOK

壁纸系列

X2712S1111AS

FORMAT
规格尺寸 /
1200mm
2700mm

THICKNESS
厚度 /
6mm

SURFACE
表面质感 /
DIGITAL
STRUCTURE
CRYSTAL
星钻面

BODY 坯色 /
LIGHT GREY
浅灰

FACES 版面 /
SINGLE 单面

CRUMPLED GREY

The grey wallpaper serves as the foundation for a unique design that combines multiple abstract patterns in a neat, patchwork fashion. Classic herringbone, stripes, checkered, and crosshatch patterns are juxtaposed with playful dots, to create a futuristic cyberpunk aesthetic with a hint of pop art flair. This innovative blend of ancient and modern civilizations exudes edgy sophistication, making it a truly one-of-a-kind design.

褶皱灰

灰色壁布为原型，叠加重抽象图案，经典的人字纹、条纹、格纹、十字纹与波点、云纹及回字纹以整齐的切块方式混合搭配，呈现出前卫波普的艺术气息，充满未来文明与古文明交错的赛博朋克感。



**CRUMPLED
GREY**

褶皱灰



**WALL
PAPER
LOOK**

壁纸系列

X2712S1111AS

FORMAT
规格尺寸 /
1200mm
2700mm

THICKNESS
厚度 /
6mm

SURFACE
表面质感 /
DIGITAL
STRUCTURE
CRYSTAL
星钻面

BODY 坯色 /
LIGHT GREY
浅灰

FACES 版面 /
SINGLE 单面

ARKOSE IVORY

The source of inspiration for this design is the ivory-white wall fabric, which features a combination of crisscrossed cross patterns and beautiful diagonal stripes in a harmonious and versatile layout. This design exudes a refined and intricate craftsmanship, as demonstrated by the subtle and delicate color changes in the warm white tone.

阿尔科斯白

象牙白色壁布为材质的灵感来源，纵横交错的十字纹与优美斜纹叠加在版面图案的设计中十分和谐百搭，暖白调中不易觉察的色彩变化更体现细腻匠心。

WALL PAPER LOOK

壁纸系列

X2712S1115ASR

FORMAT
规格尺寸 /
1200mm
2700mm

THICKNESS
厚度 /
6mm

SURFACE
表面质感 /
DIGITAL
STRUCTURE
CRYSTAL
星钻面

BODY 坯色 /
WHITE 白

FACES 版面 /
3 RANDOM
3 随机面

WALL PAPER LOOK

壁纸系列

X2712S1116ASR

FORMAT
规格尺寸 /
1200mm
2700mm

THICKNESS
厚度 /
6mm

SURFACE
表面质感 /
DIGITAL
STRUCTURE
CRYSTAL
星钻面

BODY 坯色 /
LIGHT GREY
浅灰

FACES 版面 /
3 RANDOM
3 随机面

ARKOSE GREY

This design is a perfect blend of crisscrossed crosshatch and elegant diagonal stripes, inspired by the deep grey wallpaper. The overall grey hue is uplifted by a subtle hint of warm tone, which adds an intriguing touch to the Alcossebre limestone panels.

阿尔科斯灰

深灰色壁布为材质的灵感来源，纵横交错的十字纹与优美斜纹叠加在版面图案的设计中十分和谐百搭，整体灰色中一丝若隐若现的蓝调使得阿尔科斯灰岩板为空间带来值得玩味的可能性。

MONET GARDEN

The crimson and blue-cyan peony flowers contrast with each other, and the blooming branches, the stretched texture, and the graceful posture are all depicting beauty.

莫奈花园

绯红与蓝青色的芍药花相互映衬繁花压枝头，辅之以硬笔画元素流畅的线条，舒展的纹理，绰约的身姿，都在描绘着美好。

ART MURAL LOOK

艺术壁画系列

X2712S1287AEH

FORMAT
规格尺寸 /
1200mm
2700mm

THICKNESS
厚度 /
6mm

SURFACE
表面质感 /
DIGITAL
STRUCTURED
肌理面

BODY 坯色 /
WHITE 白

FACES 版面 /
1 RANDOM
1 随机面

PRISM

The surface of the rock slab is covered with prismatic geometric blocks, which are decorated with gold, and the prismatic boxes are arranged one by one, bringing the visual effect of Moss space.

棱镜空间

以棱形几何块状铺满岩板表面，其中有金色点缀其中，一个个棱形盒子依次排列，带来摩斯空间的视觉效果。

ART MURAL LOOK

艺术壁画系列

X2712S1288AEH

FORMAT
规格尺寸 /
1200mm
2700mm

THICKNESS
厚度 /
6mm

SURFACE
表面质感 /
DIGITAL
STRUCTURED
肌理面

BODY 坯色 /
WHITE 白

FACES 版面 /
1 RANDOM
1 随机面





PRISM

棱镜空间



ART MURAL LOOK

艺术壁画系列

X2712S1288AEH

FORMAT
规格尺寸 /
1200mm
2700mm

THICKNESS
厚度 /
6mm

SURFACE
表面质感 /
DIGITAL
STRUCTURED
肌理面

BODY 坯色 /
WHITE 白

FACES 版面 /
1 RANDOM
1 随机面

P63

www.klaxslab.com



PIETRA DI GERUSALEMME

Taking inspiration from the natural mineral Pyrauxite, the design boasts a stunning radial pattern that emanates outward imbued with a pearlescent shimmer, effortlessly complements the rustic and eco-friendly vibe, ensuring that its charm remains intact for years to come.

叶蜡石

灵感来自于自然界中的天然叶蜡石矿物，放射形状的美妙纹理，搭配浅黄真珍珠晕彩的色泽，古朴生态，不惧时光的洗礼。

STONE LOOK

岩石系列

X2712S0016AS

FORMAT
规格尺寸 /
1200mm
2700mm

THICKNESS
厚度 /
6mm

SURFACE
表面质感 /
DIGITAL
STRUCTURE
MATT
肌理面

BODY 坯色 /
WHITE 白

FACES 版面 /
3 RANDOM
3 随机面

P64

www.klaxslab.com



P65

www.klaxslab.com

PIETRA DI VALS BEIGE

The Pietra Di Vals Beige gets its name from a charming mountain village in the Swiss Alps, renowned for its relaxing hot springs. This unique slab design artfully combines the natural elements of mountains, stones, and water. The variously sized gravel is carefully arranged in longitudinal patterns, which have been gently worn by the flow of water, creating a beautifully authentic depiction of tranquil rural landscapes.

瓦尔斯米黄

得名于瑞士阿尔卑斯山谷中的一个以温泉浴场闻名的小山村，瓦尔斯米黄岩板将山脉、石头、水这些元素融入岩板设计，粗细不一的沙砾铺设于流水冲刷的纵向纹理中，生动还原悠然自得的田园风光。

STONE LOOK

岩石系列

X2712S0036AS

FORMAT

规格尺寸 /
1200mm
2700mm

THICKNESS

厚度 /
6mm

SURFACE

表面质感 /
DIGITAL
STRUCTURE
MATT
肌理面

BODY 坯色 /

WHITE 白

FACES 版面 /

4 RANDOM
4 随机面

STONE LOOK

岩石系列

X2712S1217YD

FORMAT

规格尺寸 /
1200mm
2700mm

THICKNESS

厚度 /
6mm

SURFACE

表面质感 /
REALISTIC
MATT
肌理面

BODY 坯色 /

WHITE 白

FACES 版面 /

3 RANDOM
3 随机面

P66

www.klaxslab.com



OULANKA BEIGE

The pale yellow backdrop of the design evokes the timeless feel of an ancient painting. The subtle stone texture cascades downward, effortlessly capturing the dynamic essence of rivers and mountains within the continuous three-piece pattern. This seamless integration of natural inspiration and masterful craftsmanship is truly a sight to behold.

奥兰卡

淡黄底色似经久不衰的古老画卷，若隐若现的石材纹理自上倾泻而下，将河流山川的动态凝固于三片连纹形成的画幅之中，是自然赋予的灵感也是巧夺天工的匠心。

P67

www.klaxslab.com

ROMA TRAVERTINE

The neutral beige Roman travertine stone shows the indifference and elegance of the lead-washed space. Create a natural and rough travertine texture, adding a sense of nature to the home.

罗马洞石

中性米黄色的罗马洞石，朴素、庄重而不失雅致，呈现出空间洗净铅华的淡然素雅。3D喷墨打造清晰自然的洞石纹理，真石釉技术打造天然粗犷的洞石质感，为家居更添一份自然。

STONE LOOK

岩石系列

X2712S127OYSN

FORMAT
规格尺寸 /
1200mm
2700mm

THICKNESS
厚度 /
6mm

SURFACE
表面质感 /
DIGITAL
STRUCTURED
肌理面

BODY 坯色 /
WHITE 白

FACES 版面 /
3 RANDOM
3 随机面

ROMA TRAVERTINE

Soft and smart color changes and looming stripes create an appearance that has been baptized and precipitated by the years. The straight lines and stripes of the surface intersect with the curved structure of the space, forming the beauty of order with staggered lines.

罗马洞石

柔和灵动的色彩变化、若隐若现的条纹，打造如经岁月洗礼沉淀的外观。表面的直线条纹与空间的曲线结构相交接，形成线条交错的秩序之美。

STONE LOOK

岩石系列

X2712S1271YSN

FORMAT
规格尺寸 /
1200mm
2700mm

THICKNESS
厚度 /
6mm

SURFACE
表面质感 /
DIGITAL
STRUCTURED
肌理面

BODY 坯色 /
WHITE 白

FACES 版面 /
3 RANDOM
3 随机面

P68

www.klaxslab.com



BOTTEGA GREY

The gray terrazzo exudes a distinctive temperament, with its mixture of finely-grained aggregates including glass and quartz. As you move closer, the composite texture becomes more strikingly beautiful, culminating in an interior style that emanates a strong architectural feel.

宝缇嘉灰

气质感灰色调水磨石，玻璃、石英石等骨料以非常细粒的粒径夹杂其中，展现愈近愈美的复合肌理，铺设出建筑感十足的室内格调。

CEMENT LOOK

水泥系列

X2712S0034AS

FORMAT
规格尺寸 /
1200mm
2700mm

THICKNESS
厚度 /
6mm

SURFACE
表面质感 /
DIGITAL
STRUCTURE
MATT
肌理面

BODY 坯色 /
GREY 中灰

FACES 版面 /
3 RANDOM
3 随机面

CEMENT LOOK

水泥系列

X2712S0033AS

FORMAT
规格尺寸 /
1200mm
2700mm

THICKNESS
厚度 /
6mm

SURFACE
表面质感 /
DIGITAL
STRUCTURE
MATT
肌理面

BODY 坯色 /
WHITE 白

FACES 版面 /
3 RANDOM
3 随机面



BOTTEGA BEIGE

The beige-toned terrazzo exudes a unique temperament, with its blend of finely-grained aggregates including glass and quartz. As you approach, the composite texture becomes even more breathtaking, showcasing a simple yet elegant style with a texture that's rich and varied.

宝缇嘉米黄

气质感米色调水磨石，玻璃、石英石等骨料以非常细粒的粒径夹杂其中，展现愈近愈美的复合肌理，朴而有华，质感丰富。



P75

www.klaxslab.com

TERRAZZO GREY

Gray terrazzo is the best witness to the reincarnation of fashion. It is interpreted on the surface of the rock slab with the texture of real stone glaze, giving the gray terrazzo a new vitality.

水磨灰

灰色水磨石是时尚轮回的最好见证。演绎于真石釉质感的岩板表面上，赋予灰色水磨石全新的生命力。

CEMENT LOOK

水泥系列

X2712S1272YSN

FORMAT
规格尺寸 /
1200mm
2700mm

THICKNESS
厚度 /
6mm

SURFACE
表面质感 /
DIGITAL
STRUCTURED
肌理面

BODY 坯色 /
WHITE 白

FACES 版面 /
3 RANDOM
3 随机面

P76

www.klaxslab.com



P77

www.klaxslab.com

TERRAZZO BEIGE

The beige terrazzo pattern can be casual and minimalist, or it can be comfortable and minimalist, just like an oasis in the desert, refreshing and evocative.

水磨黄

当复杂繁冗的设计充斥生活，米黄色的水磨石纹样恰好能以一股清流占得一席之地，可以是随意的极简，也可以是舒适的极简，就像沙漠里的一方绿洲沁人心脾，令人回味无穷。

CEMENT LOOK

水泥系列

X2712S1273YSN

FORMAT

规格尺寸 /
1200mm
2700mm

THICKNESS

厚度 /
6mm

SURFACE

表面质感 /
DIGITAL
STRUCTURED
肌理面

BODY 坯色 /

WHITE 白

FACES 版面 /

3 RANDOM
3 随机面

P78

www.klaxslab.com



P81

www.klaxslab.com

FLORENCE GREY

The exquisite stones that adorned the walls of the Basilica di Santa Maria del Fiore in Florence inspire the golden-brown hues of the marble patterns, imbuing them with a rich history and an artistic flair. Within the patterns lie fragments of luxurious stones, which give birth to stories from different epochs.

佛罗伦萨灰

源于佛罗伦萨百花圣母大教堂墙面装饰用的名贵石材，带有历史感的金棕色画面充满带有文艺气息的大理石花纹，其间嵌入寶石碎片，不断诞生出不同时代的故事。

MARBLE LOOK

大理石系列

X2712S0074AG-1/3

FORMAT

规格尺寸 /
1200mm
2700mm

THICKNESS

厚度 /
6mm

SURFACE

表面质感 /
DRY GRANULE
POLISHED
亮光面

BODY 坯色 /

WHITE 白

FACES 版面 /

3 RANDOM
3 随机面

SILK ROAD

The network pattern, delicate branches, and dots are thoughtfully arranged to tell a story that evokes the symbolic and decorative elements found in the classic paintings of Austria's national treasure artist, Klimt. The design also incorporates marvelous oriental brushwork and color, creating a captivating fusion of East and West.

美杜莎

网纹、细小的枝杈和圆点构建故事，神似奥地利国宝画家克里姆特的经典画作中那些具有象征意义的装饰元素，而同时又带有奇妙的东方写意色彩。

MARBLE LOOK

大理石系列

X2712S0063AG-1/3

FORMAT

规格尺寸 /
1200mm
2700mm

THICKNESS

厚度 /
6mm

SURFACE

表面质感 /
DRY GRANULE
POLISHED
亮光面

BODY 坯色 /

WHITE 白

FACES 版面 /

3 RANDOM
3 随机面

P82

www.klaxslab.com



P83

www.klaxslab.com

ICE

The decorative details are simple yet elegant, with rich texture effects that create a three-dimensional, vertical and horizontal pattern. This unique pattern resembles brush marks found in artistic paint. The winding ink landscape pattern is understated, yet still elegant, making it a versatile option for decorating entire walls without appearing too busy or overbearing.

冰晶白

素雅的装饰性及肌理丰富的细节效果。立体的纵横肌理，酷似艺术涂料的独特“刷痕”。蜿蜒其中的淡墨山水纹素雅不张扬，即使用来装饰一整张墙面，也毫不夸张。素雅细腻的艺术气质，为居室空间带来宁静自然的“有氧”气息。

MARBLE LOOK

大理石系列

X2712S8383AS

FORMAT
规格尺寸 /
1200mm
2700mm

THICKNESS
厚度 /
6mm

SURFACE
表面质感 /
DIGITAL
STRUCTURE
MATT
星钻面

BODY 坯色 /
WHITE 白

FACES 版面 /
3 RANDOM
3 随机面

WHITE ALPINUS GRANITE

Drawing inspiration from the majestic Alps, the designer employs a dynamic interplay of black, white, and gray hues to capture the vast and awe inspiring snow-capped mountains. Through this abstract approach, the design deftly portrays the mesmerizing interplay of light and shadow, as well as the various moods and textures present across different elevations. This creates a sense of depth and movement that invites the viewer to immerse themselves in the beauty and grandeur of the natural world.

阿尔卑斯白

灵感来自于阿尔卑斯山，设计师用黑白灰的聚集与疏离抽象表现出辽阔壮丽的雪山中那些奇妙的光影变幻与不同层面的风情。

MARBLE LOOK

大理石系列

X2712S0061AG

FORMAT
规格尺寸 /
1200mm
2700mm

THICKNESS
厚度 /
6mm

SURFACE
表面质感 /
DRY GRANULE
POLISHED
亮光面

BODY 坯色 /
WHITE 白

FACES 版面 /
3 RANDOM
3 随机面

P84

www.klaxslab.com



P85

www.klaxslab.com

CALACATTA PALACE WHITE

This design draws inspiration from the Calacatta white marble produced in Italy, which features a bright, clean white base color complemented by dramatic veins that exude an elegant, humble, and romantically naturalistic feel. The natural beauty of the marble's veins creates a visual focal point that is both unique and striking, adding a touch of refinement and sophistication to any space it is incorporated in.

卡拉卡塔白

源自产于意大利的卡拉卡塔白大理石，明亮的洁白底色结合戏剧性的纹理，优雅谦逊、浪漫自然，自带脱俗的视觉焦点。

MARBLE LOOK

大理石系列

X2712S0001AR-1/3

FORMAT

规格尺寸 /
1200mm
2700mm

THICKNESS

厚度 /
6mm

SURFACE

表面质感 /
DIGITAL
STRUCTURE
HONED
丝绒面

BODY 坯色 /

WHITE 白

FACES 版面 /

3 SEAMLESS
MULTI-DIRECTIONAL
3片一组方向连纹

BOS PHORUS GOLD

The fossilized wood, formed over billions of years, incorporated into the creation of the slabs. The classic black and gold color scheme is even more distinctive with its unique color ratio and the intelligent use of simple straight stripes. It serves as a striking visual centerpiece of the space, while blending seamlessly with the natural environment.

黑金木化石

亿万年形成的树木化石带入岩板创作中，经典黑金配色因特殊的色彩比例和简洁知性的直条纹而更显特立独行，它不啻为空间的视觉焦点，更和环境自然融合。

MARBLE LOOK

大理石系列

X2712S0085AG-1/3

FORMAT

规格尺寸 /
1200mm
2700mm

THICKNESS

厚度 /
6mm

SURFACE

表面质感 /
DRY GRANULE
POLISHED
亮光面

BODY 坯色 /

WHITE 白

FACES 版面 /

3 RANDOM
3 随机面

P86

www.klaxslab.com



P87

www.klaxslab.com

NAEVIA WHITE

By adding a crisscrossed stone texture to a champagne-colored backdrop, this design achieves a sophisticated and stylish decoration that rivals well-known marble patterns. The texture is simple yet striking, with a slightly mottled base color that adds depth and dimension to the overall look. The result is a unique and tasteful design that will elevate any space.

纳维亚

在香槟色画幅上添加纵横交错的石材纹理，底色微醺，纹理简洁，带有不输知名大理石纹理的装饰性，品位出众。

MARBLE LOOK

大理石系列

X2712S1224YS-1/3

FORMAT
规格尺寸 /
1200mm
2700mm

THICKNESS
厚度 /
6mm

SURFACE
表面质感 /
REALISTIC
MATT
肌理面

BODY 坯色 /
WHITE 白

FACES 版面 /
3 SEAMLESS
MULTI-DIRECTIONAL
3片一组万向连纹

BLACK AGATE JET MARBLE

The designer's abstract approach to luxury stone decoration surfaces involves breaking black onyx into branch-like shapes and interweaving them with pure crystal patterns, resulting in a mesmerizing and magical black forest-like scene.

捷特黑

抽象创作奢石装饰面，设计师将黑玛瑙“打碎”成树枝状，与纯净冰晶图案相互交错，呈现出如魔法黑森林般的奇妙景象。

MARBLE LOOK

大理石系列

X2712S0065AG

FORMAT
规格尺寸 /
1200mm
2700mm

THICKNESS
厚度 /
6mm

SURFACE
表面质感 /
DRY GRANULE
POLISHED
亮光面

BODY 坯色 /
WHITE 白

FACES 版面 /
3 RANDOM
3随机面

P88

www.klaxslab.com



P89

www.klaxslab.com

NEVE FREDDA WHITE

Starting with a sophisticated gray-brown color palette, this design features irregular branch-like patterns that create a large-scale landscape painting reminiscent of a magnificent mountainous scene. The six-piece continuous pattern adds to the seamless and impressive visual appeal of the design, exuding a tranquil and graceful aura while maintaining a grand and majestic presence.

寒江雪

以脱俗的灰米色调为底，上附不规则的枝杈形纹理，六片连纹设计呈现巨幅山水画屏，雅致兰心，气势恢宏。

MARBLE LOOK

大理石系列

X2712S1216YD

FORMAT
规格尺寸 /
1200mm
2700mm

THICKNESS
厚度 /
6mm

SURFACE
表面质感 /
REALISTIC
MATT
肌理面

BODY 坯色 /
WHITE 白

FACES 版面 /
6 RANDOM
6 随机面

MARBLE LOOK

大理石系列

X2712S1220YD-1/3

FORMAT
规格尺寸 /
1200mm
2700mm

THICKNESS
厚度 /
6mm

SURFACE
表面质感 /
REALISTIC
MATT
肌理面

BODY 坯色 /
WHITE 白

FACES 版面 /
3 SEAMLESS
MULTI-DIRECTIONAL
3片一组万向连纹

P90

www.klaxslab.com

PULLLOS

The clear and transparent texture of jade forms the base, while the smoothly rolling clouds and the subtle water ripples create a winding and layered pattern, introducing distinctive elements of Eastern aesthetics into the space.

普洛斯

晶莹剔透的玉石质感为底，绵延起伏的云雾和似有似无的水波涟漪图案蜿蜒层叠，为空间带入独特的东方美学元素。



PULLOS

普洛斯



MARBLE LOOK

大理石系列

X2712S1220YD-1/3

FORMAT
规格尺寸 /
1200mm
2700mm

THICKNESS
厚度 /
6mm

SURFACE
表面质感 /
REALISTIC
MATT
肌理面

BODY 坯色 /
WHITE 白

FACES 版面 /
3 SEAMLESS
MULTI-DIRECTIONAL
3片一组万向连纹

CALACATTA ROYAL

Carrara gold originated from the Tuscany region of Italy. It has a large area of milky white base and a distinctive gray gold streamlined texture, giving the space an elegant and fashionable atmosphere.

卡拉拉金

卡拉拉金就源于意大利托斯卡纳地区，大面积乳白打底，搭配鲜明的灰金流线型纹理，赋予空间优雅又不失时尚的氛围。

MARBLE LOOK

大理石系列

X2712S1274YSR-1/2

FORMAT
规格尺寸 /
1200mm
2700mm

THICKNESS
厚度 /
6mm

SURFACE
表面质感 /
DIGITAL
STRUCTURED
肌理面

BODY 坯色 /
WHITE 白

FACES 版面 /
2 SEAMLESS
MULTI-DIRECTIONAL
2片一组方向连纹



CALACATTA GREEN

Karakata green is a very rare variety in the Karakata family. It has a more artistic sense. It is known for its green and famous for its green. It restores the green rhythm that is reconciled with the power of nature and lights up the greenness in the space.

卡拉卡塔绿

卡拉卡塔绿是卡拉卡塔家族中非常罕见的品种，更具有艺术感，以绿著称，以绿闻名，还原以自然之力调和的绿色律动，点亮空间中的绿意盎然。



MARBLE LOOK

大理石系列

X2712S1275YSR-1/2

FORMAT
规格尺寸 /
1200mm
2700mm

THICKNESS
厚度 /
6mm

SURFACE
表面质感 /
DIGITAL
STRUCTURED
肌理面

BODY 坯色 /
WHITE 白

FACES 版面 /
2 SEAMLESS
MULTI-DIRECTIONAL
2片一组方向连纹



**CALACATTA
GREEN**

卡拉卡特绿



**MARBLE
LOOK**

大理石系列

X2712S1275YSR-1/2

FORMAT
规格尺寸 /
1200mm
2700mm

THICKNESS
厚度 /
6mm

SURFACE
表面质感 /
DIGITAL
STRUCTURED
肌理面

BODY 坯色 /
WHITE 白

FACES 版面 /
2 SEAMLESS
MULTI-DIRECTIONAL
2片一组万向连纹

CALACATTA NEVE

Calacatta neve has a delicate texture of glass texture, like a classical beauty with a skin like fat, dancing in the snow in lavender tulle, like ice and snow, stretching gracefully

香雪梅

香雪梅大理石有着玻璃质感的细腻纹理，宛若一个肤如凝脂的古典美人，披上淡紫薄纱在雪中起舞，如冰似雪，优雅伸展。

MARBLE LOOK

大理石系列

X2712S1276YSR-1/2

FORMAT
规格尺寸 /
1200mm
2700mm

THICKNESS
厚度 /
6mm

SURFACE
表面质感 /
DIGITAL
STRUCTURED
肌理面

BODY 坯色 /
WHITE 白

FACES 版面 /
2 SEAMLESS
MULTI-DIRECTIONAL
2片一组方向连纹

BULGARIA GREY

Natural marble Bulgarian gray, with two different colors of deep gray and elegant fine white, appears in the world, simple and solemn, eye-catching and unique personality.

保加利亚灰

天然大理石保加利亚灰，以深邃的灰色与淡雅的细白两种不同色彩现于世人，简约庄重，瞩目且独具个性。

MARBLE LOOK

大理石系列

X2712S1278YSR

FORMAT
规格尺寸 /
1200mm
2700mm

THICKNESS
厚度 /
6mm

SURFACE
表面质感 /
DIGITAL
STRUCTURED
肌理面

BODY 坯色 /
WHITE 白

FACES 版面 /
3 RANDOM
3 随机面



**BULGARIA
GREY**

保加利亚灰



**MARBLE
LOOK**

大理石系列

X2712S1278YSR

FORMAT
规格尺寸 /
1200mm
2700mm

THICKNESS
厚度 /
6mm

SURFACE
表面质感 /
DIGITAL
STRUCTURED
肌理面

BODY 坯色 /
WHITE 白

FACES 版面 /
3 RANDOM
3 随机面

P101

www.klaxslab.com

BULGARI BLACK

The strong black and white contrast and collision of Bulgari black marble constitute a wonderful visual attraction, giving the space a luxurious and elegant temperament.

宝格丽黑

宝格丽黑大理石

浓烈的黑白对比碰撞，

构成奇妙的视觉吸引力，

为空间赋予奢华典雅的气质。

MARBLE LOOK

大理石系列

X2712S1281YSR-1/2

FORMAT
规格尺寸 /
1200mm
2700mm

THICKNESS
厚度 /
6mm

SURFACE
表面质感 /
DIGITAL
STRUCTURED
肌理面

BODY 坯色 /
WHITE 白

FACES 版面 /
2 SEAMLESS
MULTI-DIRECTIONAL
2片一组方向连纹

MARBLE LOOK

大理石系列

X2712S1279YSR

FORMAT
规格尺寸 /
1200mm
2700mm

THICKNESS
厚度 /
6mm

SURFACE
表面质感 /
DIGITAL
STRUCTURED
肌理面

BODY 坯色 /
WHITE 白

FACES 版面 /
3 RANDOM
3随机面

P102

www.klaxslab.com

NAPOLEON BLACK

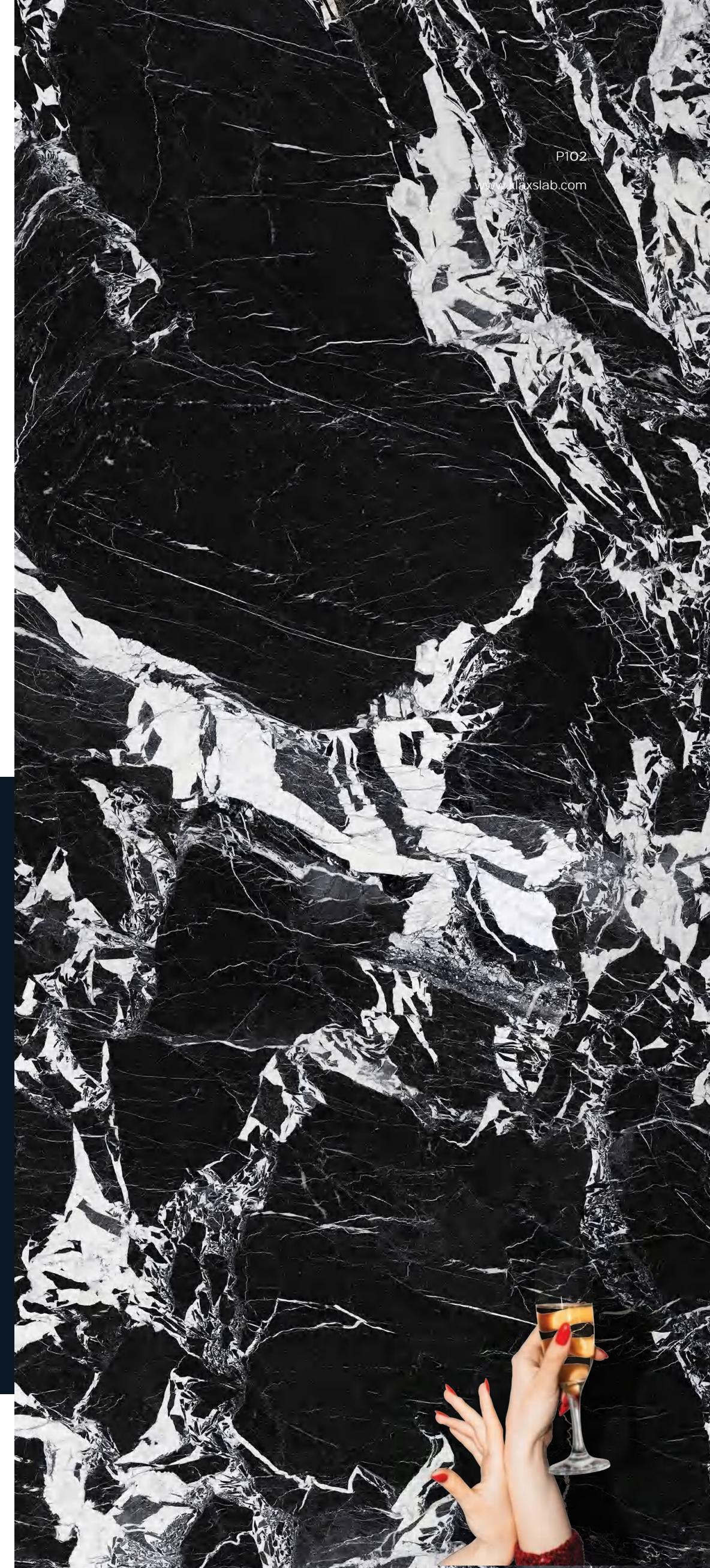
The Napoleon black layout depicts the magnificent and galloping waves, flowing with the domineering and trendy sense of belonging to the king.

拿破仑黑

拿破仑黑版面描绘出波澜

壮阔奔腾之势的海浪，

流淌着属于王者的霸气与潮流感





鱼肚白
CALACATTA
WHITE
X2412V1222YS



卡拉卡塔白
CALACATTA
PALACE WHITE
X2412V0001AR



白杨灰
ASPEN GREY
X2412V1160AR-1/3



比特灰
PIETRA GREY
X2412V1162AVP-1/3



米斯特白
MISTRAL BEIGE
X2412V1152AVP



米斯特浅灰
MISTRAL
LIGHT GREY
X2412V1153AVP



米斯特灰
MISTRAL
DARK GREY
X2412V1154AVP



杰克黑
BLACK JACK
X2412V1157AS



卡特白
KRATER GOLDEN ECRU
X2412V1174AL



卡特深灰
KHALITE LONDON FOG
X2412V1199AL



阿特拉斯银
ATLAS SKY
SILVER
X2412V1158AP



阿特拉斯灰
ATLAS CLOUD
GREY
X2412V1159AP



烟灰褐
KLAXICEM
SMOCKY TAUPE
X2412J1155AS



铁锚灰
KLAXICEM
ANCHOR GREY
X2412J1156AS



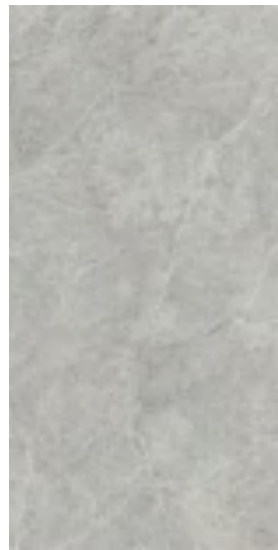
奥爵白
PURE SILVER
BEIGE
X2412V1150ASR



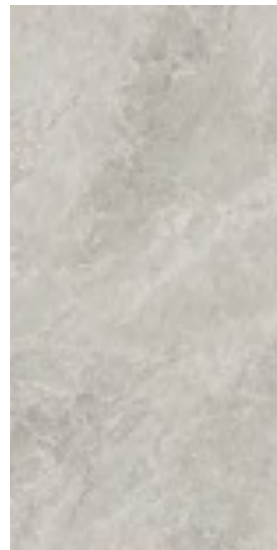
奥爵灰
PURE SILVER
GREY
X2412V1151ASR



托尔尼奥
TORNIO
X2412V1243YSN



盖伊灰
KRATER GREY
X2412V1161AVP



奥斯塔
AOSTA
X2412V1251YSN-1/3

1200mm
2400mm

P109

www.klaxslab.com

CALACATTA PALACE WHITE

Derived from the highest quality Italian Carrara white marble, renowned for its artistic excellence, this marble features a pure white base color adorned with dramatic textures that exude an elegant and refined temperament, making it an innate visual centerpiece.

卡拉卡塔白

源自艺术品级意大利卡拉卡塔白大理石，洁白底色结合戏剧性纹理，散发优雅脱俗的气质，是天生的视觉焦点。

MARBLE LOOK

大理石系列

X2412V0001AR

FORMAT
规格尺寸 /
1200mm
2400mm

THICKNESS
厚度 /
9mm

SURFACE
表面质感 /
DIGITAL
STRUCTURE
HONED
丝绒面

BODY 坯色 /
WHITE 白

FACES 版面 /
4 RANDOM
4 随机面

MARBLE LOOK

大理石系列

X2412V1160AR-1/3

FORMAT
规格尺寸 /
1200mm
2400mm

THICKNESS
厚度 /
9mm

SURFACE
表面质感 /
DIGITAL
STRUCTURE
HONED
丝绒面

BODY 坯色 /
WHITE 白

FACES 版面 /
3 SEAMLESS
MULTI-DIRECTIONAL
3片一组万向连纹

ASPEN GREY

This marble features a subtle blend of white and gray tones, accented by a delicate and understated pattern reminiscent of distant mountain ink. Its large-scale tiling applications are ideal for adjusting the light and shadow dynamics of a space, while its versatile decorative style can complement a wide range of materials and design aesthetics.

白杨灰

适当过渡的白与灰载以简洁柔和的远山淡墨花纹，适合以大尺度的铺贴应用来调节空间明暗关系，舒展的装饰性可以容纳各种材质与风格。

P110

www.klaxslab.com



P111

www.klaxslab.com

KRATER GREY

The warm gray undertone of the design is accentuated by the soft and uniformly distributed veins of exquisite marble. Some veins are white like fissures, while others are brown-gray like valleys, adding a perfect finishing touch to the overall design. The combination of these elements creates an intricate and captivating pattern, inspired by the ingenuity of nature's creations.

盖伊灰

温暖的灰调底色搭配柔和均匀的美丽大理石纹，微白如沟纵横裂变、棕灰如谷渲染点睛，糅合勾勒却百看不腻，皆因灵感来自自然造物的巧妙构思。

MARBLE LOOK

大理石系列

X2412V1161AVP

FORMAT
规格尺寸 /
1200mm
2400mm

THICKNESS
厚度 /
9mm

SURFACE
表面质感 /
CARVING
GLAZE
LAPPATO
肌理面

BODY 坯色 /
LIGHT GREY
浅灰

FACES 版面 /
4 RANDOM
4 随机面

MARBLE LOOK

大理石系列

X2412V1158AP

FORMAT
规格尺寸 /
1200mm
2400mm

THICKNESS
厚度 /
9mm

SURFACE
表面质感 /
DRY GRANULE
LAPPATO
肌理面

BODY 坯色 /
LIGHT GREY
浅灰

FACES 版面 /
3 RANDOM
3 随机面

P112

www.klaxslab.com

ATLAS SKY SILVER

Indulging in a daydream of the starry sky in broad daylight, where the texture of the stone created a tapestry of stars flowing in a misty haze. The smooth gray gradient showcased the ever-changing and fluid nature of the sky, evoking a sense of romanticism and whimsy.

阿特拉斯银

作了一场白日星空的幻想，石材纹理织画出迷雾弥漫中群星流动的景象，丝滑的灰色渐变呈现出星空的变幻游移，衍生出一种浪漫趣味。



**ATLAS SKY
SILVER**

阿特拉斯银



**MARBLE
LOOK**

大理石系列

X2412V1158AP

FORMAT

规格尺寸 /
1200mm
2400mm

THICKNESS

厚度 /
9mm

SURFACE

表面质感 /
DRY GRANULE
LAPPATO
肌理面

BODY 坯色 /

LIGHT GREY
浅灰

FACES 版面 /

3 RANDOM
3 随机面

P115

www.klaxslab.com

ATLAS CLOUD GREY

As the night falls, the stone's texture creates a stunning depiction of the Milky Way and glittering stars in the sky. The deep gray background adds an element of mystery and tranquility, allowing the space to naturally emanate an imaginative and distant ambiance.

阿特拉斯灰

夜幕降临的时刻，石材纹理织画出夜空中银河繁星璀璨的景象，深灰底色神秘而静谧，使空间自然悠远散发想象力。

MARBLE LOOK

大理石系列

X2412V1159AP

FORMAT

规格尺寸 /
1200mm
2400mm

THICKNESS

厚度 /
9mm

SURFACE

表面质感 /
DRY GRANULE
LAPPATO
肌理面

BODY 坯色 /

LIGHT GREY
浅灰

FACES 版面 /

3 RANDOM
3 随机面

MARBLE LOOK

大理石系列

X2412V1243YSN

FORMAT

规格尺寸 /
1200mm
2400mm

THICKNESS

厚度 /
9mm

SURFACE

表面质感 /
REALISTIC
MATT
肌理面

BODY 坯色 /

LIGHT GREY
浅灰

FACES 版面 /

3 RANDOM
3 随机面

P116

www.klaxslab.com

TORNIO

The base color resembles an ancient parchment scroll, and the vertical golden-brown veins add a sense of historical gravitas to it. The faint and delicate textures are subtly interwoven within the nuanced color variations, offering a discreet yet distinctive decorative effect.

托尔尼奥

好似古老的羊皮纸卷的底色，金棕色的纵向纹理更为其增加一分历史的厚重感，隐隐约约的细小肌理隐秘地生长在颜色的微妙变化中，提供一种低调且独特的装饰效应。

P117

www.klaxslab.com

PIETRA GREY

The stunning parallel veins of marble served as the inspiration for the design, replicating the grandeur of natural landscapes and enabling the space to extend limitlessly through a continuous layout.

比特灰

山川壮美的平行大理石纹为设计灵感，描摹气势恢宏的天然景象，使空间在连续的版面加持中获得无限延伸。

MARBLE LOOK

大理石系列

X2412V1162AVP-1/3

FORMAT

规格尺寸 /

1200mm

2400mm

THICKNESS

厚度 /

9mm

SURFACE

表面质感 /

GARVING

GLAZE

LAPPATO

肌理面

BODY 坯色 /

GREY 中灰

FACES 版面 /

3 SEAMLESS

MULTI-DIRECTIONAL

3片一组万向连纹

P118

www.klaxslab.com





CALACATTA WHITE

鱼肚白



MARBLE LOOK

大理石系列

X2412V1222YS

FORMAT
规格尺寸 /
1200mm
2400mm

THICKNESS
厚度 /
9mm

SURFACE
表面质感 /
MATT
肌理面

BODY 坯色 /
WHITE 白

FACES 版面 /
6 RANDOM
6 随机面

P121

www.klaxslab.com

CALACATTA WHITE

Recreated from the classic Italian Calacatta marble, this white stone boasts a fresh and elegant gray-white color scheme, complemented by a naturally flowing texture that makes it a timeless material for creating a chic living space with minimal effort.

鱼肚白

复刻经典意大利卡拉卡塔系白色大理石，清新雅致的灰白配色，率性自然的石材纹理，是打造时髦居室时无须多想的经典素材。

MARBLE LOOK

大理石系列

X2412V1222YS

FORMAT
规格尺寸 /
1200mm
2400mm

THICKNESS
厚度 /
9mm

SURFACE
表面质感 /
MATT
肌理面

BODY 坯色 /
WHITE 白

FACES 版面 /
6 RANDOM
6 随机面

MARBLE LOOK

大理石系列

X2412V1251YSN-1/3

FORMAT
规格尺寸 /
1200mm
2400mm

THICKNESS
厚度 /
9mm

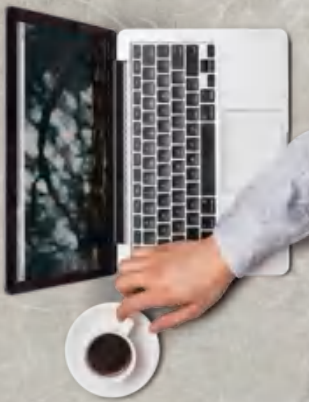
SURFACE
表面质感 /
REALISTIC
MATT
肌理面

BODY 坯色 /
LIGHT GREY
浅灰

FACES 版面 /
3 SEAMLESS
MULTI-DIRECTIONAL
3片一组万向连纹

P122

www.klaxslab.com



AOSTA

Drawing inspiration from the versatile shades of gray marble, this design captures the rich texture of the rock's surface, which reflects the time dimension of its long growth in the mines. The resulting effect is a sparkling radiance that illuminates indoor spaces with a unique and captivating charm. The universal continuous pattern design further enhances this decorative effect, making it an exceptional material for creating timeless and elegant interiors.

奥斯塔

灵感采集自风情万种的灰色调大理石，矿山生长的漫长时间维度，都印刻在岩板版面设计的丰富纹理中，令室内空间熠熠生辉，万向连纹设计更放大了这种装饰效果。



AOSTA

奥斯塔



MARBLE LOOK

大理石系列

X2412V125IYSN-1/3

FORMAT
规格尺寸 /
1200mm
2400mm

THICKNESS
厚度 /
9mm

SURFACE
表面质感 /
REALISTIC
MATT
肌理面

BODY 坯色 /
LIGHT GREY
浅灰

FACES 版面 /
3 SEAMLESS
MULTI-DIRECTIONAL
3片一组万向连纹

P125

www.klaxslab.com

KRATER GOLDEN ECRU

A journey to the foggy city, where wispy clouds drift in and out of view, creating a mesmerizing display of patterned textures on the rocky terrain. Layered and dyed with extraordinary and otherworldly beauty, this scenery is nothing short of captivating.

卡特白

共赴雾都之旅，若隐若现的氤氲云雾，以图案纹理的方式呈现于岩板上，层叠晕染，超凡脱俗。

STONE LOOK

岩石系列

X2412V1174AL

FORMAT
规格尺寸 /
1200mm
2400mm

THICKNESS
厚度 /
9mm

SURFACE
表面质感 /
DRY GRANULE
MATT
肌理面

BODY 坯色 /
WHITE 白

FACES 版面 /
4 RANDOM
4 随机面



P126

www.klaxslab.com



STONE LOOK

岩石系列

X2412J1199AL

FORMAT
规格尺寸 /
1200mm
2400mm

THICKNESS
厚度 /
12mm

SURFACE
表面质感 /
DRY GRANULE
MATT
肌理面

BODY 坯色 /
LIGHT GREY
浅灰

FACES 版面 /
4 RANDOM
4 随机面

KHALITE LONDON FOG

Join me on a journey to the foggy city, where we'll venture through a grey-toned atmosphere shrouded in mist, and rediscover the mesmerizing beauty of the rocky terrain. With each step, we'll witness the interplay of light and shadow revealing the intricate textures etched into the rocks, creating a surreal and unforgettable experience.

卡特深灰

共赴雾都之旅，穿越雾气弥漫的灰调氛围表层，在光影的叠加重现蚀刻岩石的美丽肌理。



**KHALITE
LONDON
FOG**

卡特深灰



**STONE
LOOK**

岩石系列

X2412V1199AL

FORMAT
规格尺寸 /
1200mm
2400mm

THICKNESS
厚度 /
9mm

SURFACE
表面质感 /
DRY GRANULE
MATT
肌理面

BODY 坯色 /
LIGHT GREY
浅灰

FACES 版面 /
4 RANDOM
4 随机面

P131

www.klaxslab.com

KLAXICEM ANCHOR GREY

The smooth gray-tone monochrome surface design conveys an air of simplicity and inclusiveness, creating a space that is open to all. While it may not be a magnificent visual centerpiece, it has the power to shape the space into an instrument that evokes various sensory connotations. It accommodates everything, creating a harmonious and inviting atmosphere.

铁锚灰

平滑的灰调纯色表面设计，传递大道至简、海纳百川的空间气质。它不是华丽的视觉中心，却可以通过包容万物，塑造不同感官内涵的空间仪表。

COLOUR LOOK

色彩系列

X2412J1156AS

FORMAT
规格尺寸 /
1200mm
2400mm

THICKNESS
厚度 /
12mm

SURFACE
表面质感 /
DIGITAL
STRUCTURE
MATT
星钻面

BODY 坯色 /
GREY 中灰

FACES 版面 /
3 RANDOM
3 随机面

COLOUR LOOK

色彩系列

X2412J1155AS

FORMAT
规格尺寸 /
1200mm
2400mm

THICKNESS
厚度 /
12mm

SURFACE
表面质感 /
DIGITAL
STRUCTURE
MATT
星钻面

BODY 坯色 /
WHITE 白

FACES 版面 /
3 RANDOM
3 随机面

P132

www.klaxslab.com

KHALITE SMOCKY TAUPE

The solid beige color design establishes a comfortable atmosphere in any environment. Its versatility allows it to be used alone with appropriate shades or combined with highly decorative materials, providing increased visual intensity and adaptability. Its subtle elegance and timeless charm make it a popular choice for a wide range of interior design styles.

烟灰褐

米咖纯色设计为环境奠定舒适基调，单独使用浓淡合宜，更可以搭配强装饰性的材质来提高视觉浓度，可塑性十足。



P135

www.klaxslab.com

MISTRAL LIGHT GREY

The unique process imitates the surface texture of micro-cement, creating a return to simplicity and nature. The light gray color selection in the design conveys a sense of Wabi-sabi, embracing a minimalist aesthetic that is both simple and elegant and inviting atmosphere.

米斯特浅灰

特殊工艺模拟微水泥的表面质感，返璞归真，浑然天成，浅灰选色设计传递侘寂风向的空间情绪，质朴脱俗。

CEMENT LOOK

水泥系列

X2412V1153AVP

FORMAT
规格尺寸 /
1200mm
2400mm

THICKNESS
厚度 /
9mm

SURFACE
表面质感 /
CARVING
GLAZE
LAPPATO
肌理面

BODY 坯色 /
LIGHT GREY
浅灰

FACES 版面 /
4 RANDOM
4 随机面

CEMENT LOOK

水泥系列

X2412V1152AVP

FORMAT
规格尺寸 /
1200mm
2400mm

THICKNESS
厚度 /
9mm

SURFACE
表面质感 /
CARVING
GLAZE
LAPPATO
肌理面

BODY 坯色 /
WHITE 白

FACES 版面 /
4 RANDOM
4 随机面

P136

www.klaxslab.com

MISTRAL BEIGE

The special technique replicates the surface texture of micro-cement, evoking a return to simplicity and nature that exudes an inherent warmth. The design's selection of beige colors creates a space that caters to our most basic ecological living needs, providing a sense of closeness to nature.

米斯特白

特殊工艺模拟微水泥的表面质感，返璞归真，浑然天成，米黄选色设计营造温暖的空间感受，贴近最原始生态的居住诉求。

P137

www.klaxslab.com

MISTRAL DARK GREY

The special technique replicates the surface texture of micro-cement, evoking a return to simplicity and nature that exudes an effortless beauty. The deep gray color selection in the design enhances the ability to model the environment with a high-end texture, resulting in an engaging sense of spatial progression that captivates the senses.

米斯特灰

特殊工艺模拟微水泥的表面质感，返璞归真，浑然天成，深灰染色设计带来质感高级的环境造型能力，造就引人入胜的空间递进感。

CEMENT LOOK

水泥系列

X2412V1154AVP

FORMAT
规格尺寸 /
1200mm
2400mm

THICKNESS
厚度 /
9mm

SURFACE
表面质感 /
CARVING
GLAZE
LAPPATO
肌理面

BODY 坯色 /
GREY 中灰

FACES 版面 /
4 RANDOM
4 随机面



P138

www.klaxslab.com



CEMENT LOOK

水泥系列

X2412V1157AS

FORMAT
规格尺寸 /
1200mm
2400mm

THICKNESS
厚度 /
9mm

SURFACE
表面质感 /
DIGITAL
STRUCTURE
MATT
星钻面

BODY 坯色 /
GREY 中灰

FACES 版面 /
3 RANDOM
3 随机面

BLACK JACK

The distinct design mixes metal particles with black rocks, creating a refined and modern look that exudes a gentlemanly quality. This style achieves a sense of otherworldliness and independent living, as if living in a world apart.

杰克黑

独特设计在于黑色岩石中混合金属微粒，由此呈现出一种带有现代科技感的绅士气质，获得一种遗世独立的自在生活。

P139

www.klaxslab.com

PURE SILVER GREY

The special technique emulates the surface texture of micro-cement, and the gray and khaki color design is so fitting that the rock panel itself becomes a stylish piece without any additional carving needed. Its timeless design ensures that it won't fade with the passage of time.

奥爵灰

特殊工艺模拟微水泥的表面质感，灰卡其色设计设色如此恰当，使得岩板本身就是时尚单品，无需用力雕琢，经典不会随时间而褪色。

CEMENT LOOK

水泥系列

X2412V1151ASR

FORMAT
规格尺寸 /
1200mm
2400mm

THICKNESS
厚度 /
9mm

SURFACE
表面质感 /
DIGITAL
STRUCTURE
CRYSTAL
星钻面

BODY 坯色 /
LIGHT GREY
浅灰

FACES 版面 /
3 RANDOM
3 随机面

CEMENT LOOK

水泥系列

X2412V1150ASR

FORMAT
规格尺寸 /
1200mm
2400mm

THICKNESS
厚度 /
9mm

SURFACE
表面质感 /
DIGITAL
STRUCTURE
CRYSTAL
星钻面

BODY 坯色 /
WHITE 白

FACES 版面 /
3 RANDOM
3 随机面

P140

www.klaxslab.com

PURE SILVER BEIGE

The special technique replicates the surface texture of micro-cement, while the champagne beige color design creates opportunities for producing diverse styles and innovative pieces. All the design combinations are so well-suited that they blend seamlessly into the environment, as if they were meant to be there.

奥爵白

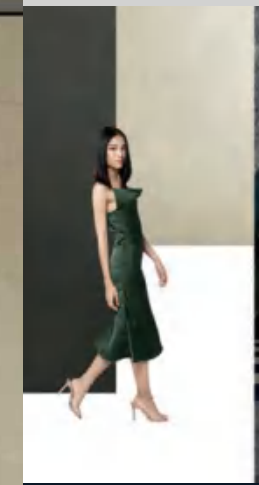
特殊工艺模拟微水泥的表面质感，香槟米色设计为打造多种风格与创新单品创造了可能性，一切设计搭配都合理得仿佛只是轻轻融入了自然。





PURE
SILVER
BEIGE

奥爵白



CEMENT
LOOK

水泥系列

X2412V1150ASR

FORMAT
规格尺寸 /
1200mm
2400mm

THICKNESS
厚度 /
9mm

SURFACE
表面质感 /
DIGITAL
STRUCTURE
CRYSTAL
星钻面

BODY 坯色 /
WHITE 白

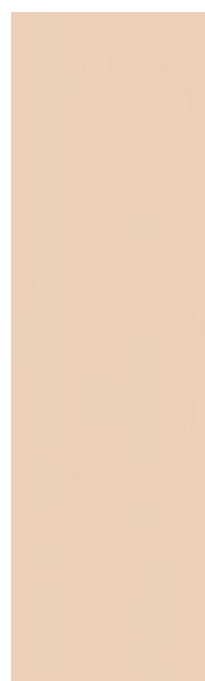
FACES 版面 /
3 RANDOM
3 随机面



细腻白
DELICATE
WHITE
X0278S1140AR



火山灰
GENTLE
GREY
X0278S1141AR



烟灰粉
LIP PEACH
X0278S1144AR



抹茶绿
TEA GREEN
X0278S1142AR



静谧蓝
ARCTIC BLUE
X0278S1143AR



泽布拉黑
ZEBRANO
BLACK
X0278V1136AS



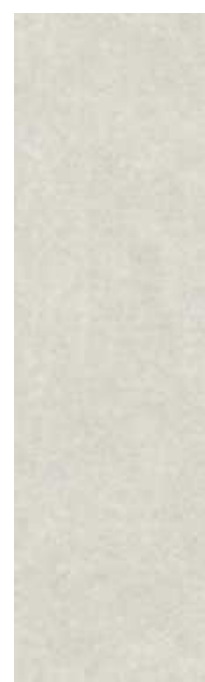
玛拉克灰
TAMARACK
GREY
X0278S1133AS



米色砂岩
SANDSTONE
BEIGE
X0278V1264YSN



象牙白
IVORY
X0278V1265ASR



多尔弗砂
DOLPHUR
SAND
X0278S1127AS



拉里斯白
LARICE
SBIANCATO
X0278S1137AS



拉里斯灰
LARICE GREY
X0278S1138AS



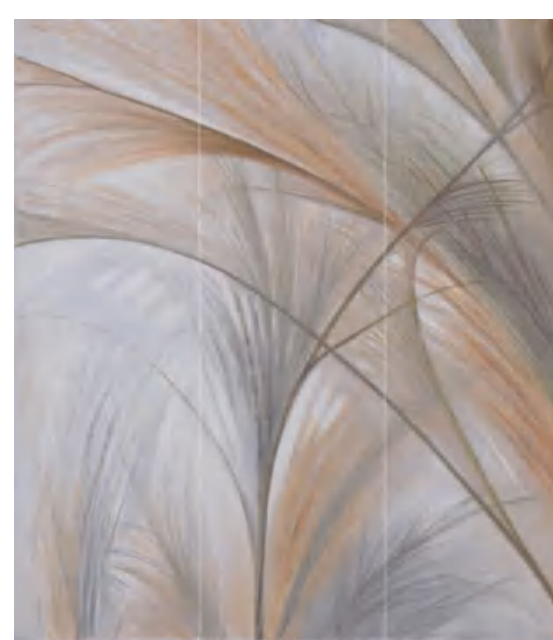
库比灰
COMBI GREY
X0278S1139AS



约克灰
YORK GREY
X0278S1128AS



约克棕
YORK BROWN
X0278S1129AS



芦苇荡
REED
X0278S1149ASR-1/3



云雾白
MIST WHITE
X0278S1148AR-1/4

800mm
2700mm

P145

www.klaxslab.com

SANDSTONE BEIGE

The surface of SANDSTONE BEIGE has rich texture, strong plasticity and expressive power, which can fully display various artistic styles. It is beautiful and agile, not lacking in luxury and grandeur.

米色砂岩

米色砂岩表面具有丰富肌理质感，强烈的可塑性和表现力可使其尽显各种不同的艺术风格，优美灵动，拙朴古朴，又不失华贵大气。

ROCK LOOK

岩石系列

XO278V1264YSN

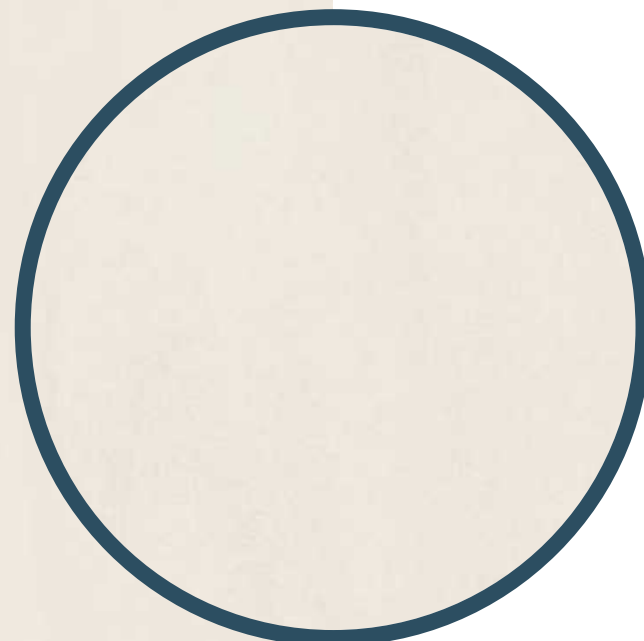
FORMAT
规格尺寸 /
800mm
2700mm

THICKNESS
厚度 /
9mm

SURFACE
表面质感 /
DIGITAL
STRUCTURE
MATT
肌理面

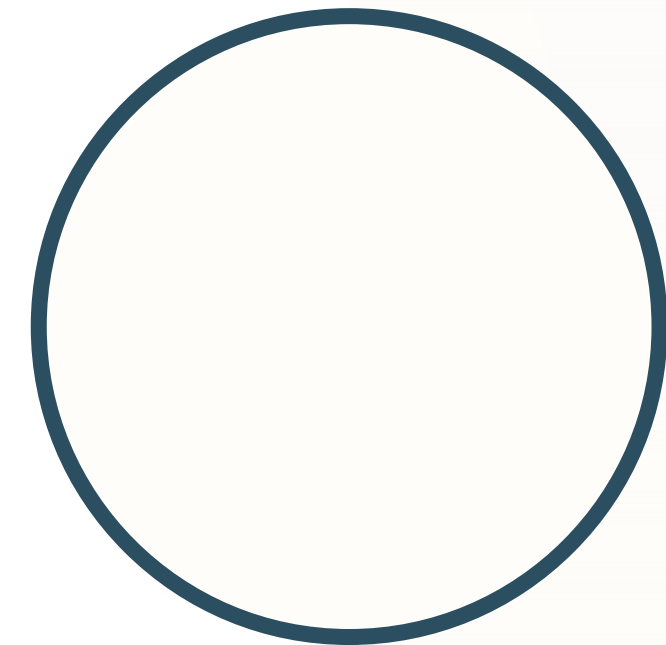
BODY 坯色 /
WHITE 白

FACES 版面 /
4 RANDOM
4 随机面



P146

www.klaxslab.com



COLOUR LOOK

色彩系列

XO278V1265ASR

FORMAT
规格尺寸 /
800mm
2700mm

THICKNESS
厚度 /
9mm

SURFACE
表面质感 /
DIGITAL
STRUCTURE
CRYSTAL
星钻面

BODY 坯色 /
WHITE 白

FACES 版面 /
SINGLE
单面

IVORY

With the luster of ice age mammoth ivory, the color is gentle and fresh, the visual effect is simple and elegant, the texture is solid and tight, and has a unique artistic beauty.

象牙白

带有冰河世纪猛犸象牙般光泽，色泽温和清新，视效简练素雅，质地坚实紧密，颇具独特的艺术之美。

P147

www.klaxslab.com

LIP PEACH

Thanks to its impeccable balance of grayscale and brightness, Klax's ash pink slab is a versatile choice for a wide range of settings. It can be used to create stylish, contrasting color schemes or paired with a variety of materials to produce scenes that transition seamlessly from retro to futuristic. This ability to adapt to different aesthetics makes it an ideal choice for those seeking a timeless yet modern look.

烟灰粉

恰到好处灰度和明度，使得凯莱仕烟灰粉岩板可以用于更广泛的使用场景，参与时髦撞色、亦或搭配综合材质，呈现可复古可未来的场景转换。

COLOUR LOOK

色彩系列

XO278S1144AR

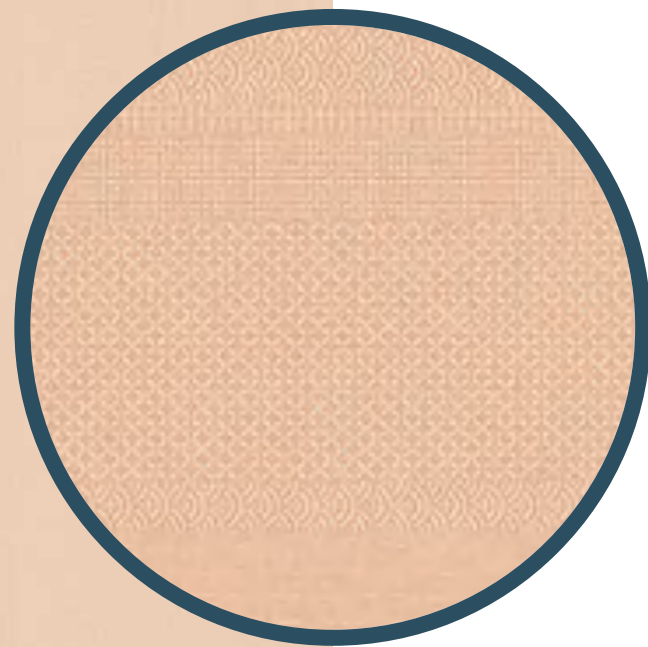
FORMAT
规格尺寸 /
800mm
2700mm

THICKNESS
厚度 /
9mm

SURFACE
表面质感 /
DIGITAL
STRUCTURE
HONED
丝绒面

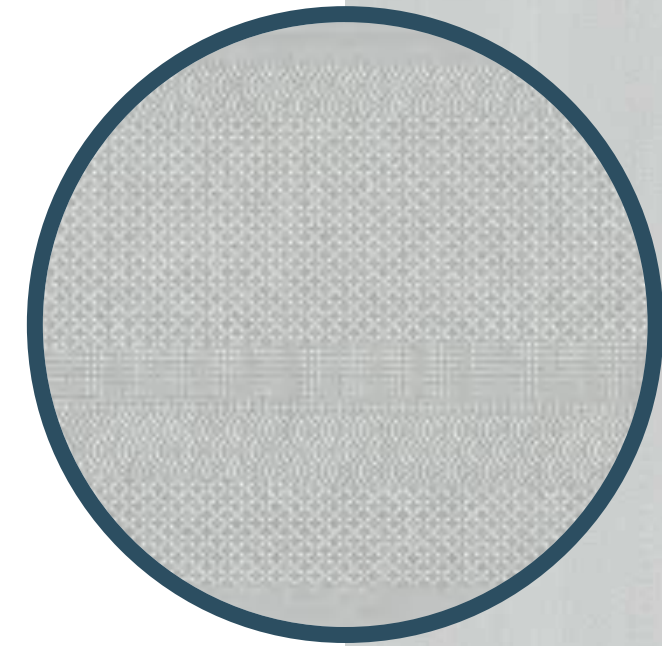
BODY 坯色 /
WHITE 白

FACES 版面 /
2 RANDOM
2 随机面



P148

www.klaxslab.com



COLOUR LOOK

色彩系列

XO278S1141AR

FORMAT
规格尺寸 /
800mm
2700mm

THICKNESS
厚度 /
9mm

SURFACE
表面质感 /
DIGITAL
STRUCTURE
HONED
丝绒面

BODY 坯色 /
WHITE 白

FACES 版面 /
2 RANDOM
2 随机面

GENTLE GREY

At a distance, it looks like a plain concrete surface, but upon closer inspection, intricate patterns interlace with subtle sparkling diamond-like reflections adorning its surface. The design strikes a perfect balance between being pure and understated, while still managing to be rich and intricate without becoming overly busy.

火山灰

远看是侘寂水泥，近看却是图案交织的细腻设计，星钻微闪点缀其上，纯净而不直白，丰富却不喧闹。

P149

www.klaxslab.com

ARCTIC BLUE

The misty and ethereal texture of this design creates an air of mystery, while the intricate pattern details resemble the ebb and flow of water, creating a romantic and dreamy atmosphere. The serene blue hue adds a deep and contemplative dimension to the overall aesthetic, evoking a sense of calm and introspection. Together, these elements combine to create a visually stunning and emotionally evocative design.

静谧蓝

雾霭沉沉、碧波飘渺的氤氲质感，图案细节远看呈现水波流动的浪漫画面，宁静蓝调，意境深远。

COLOUR LOOK

色彩系列

XO278S1143AR

FORMAT

规格尺寸 /
800mm
2700mm

THICKNESS

厚度 /
9mm

SURFACE

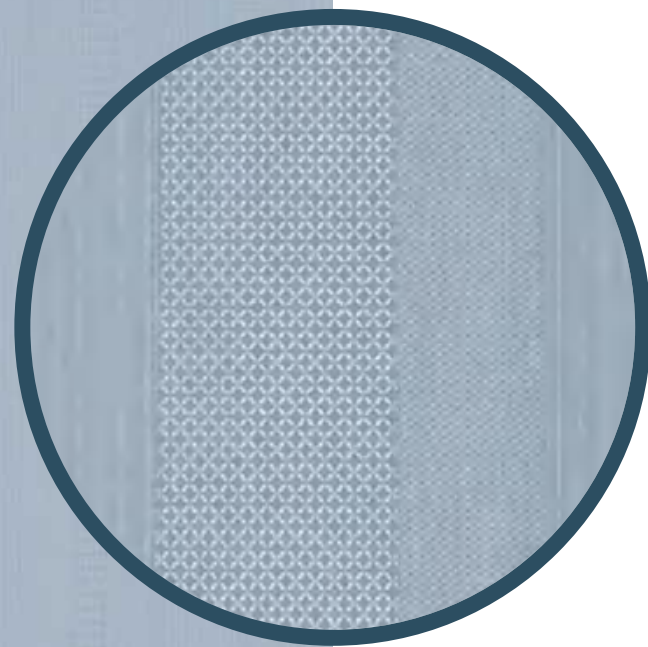
表面质感 /
DIGITAL
STRUCTURE
HONED
丝绒面

BODY 坯色 /

WHITE 白

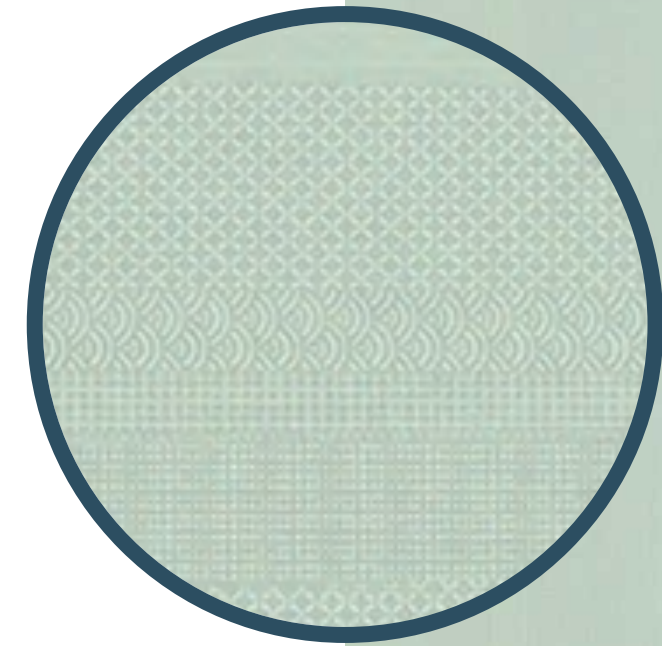
FACES 版面 /

2 RANDOM
2 随机面



P150

www.klaxslab.com



COLOUR LOOK

色彩系列

XO278S1142AR

FORMAT

规格尺寸 /
800mm
2700mm

THICKNESS

厚度 /
9mm

SURFACE

表面质感 /
DIGITAL
STRUCTURE
HONED
丝绒面

BODY 坯色 /

WHITE 白

FACES 版面 /

2 RANDOM
2 随机面

TEA GREEN

The new French-style light green color adds a refreshing and calming touch to any space. Its natural and effortless tones effortlessly blend with all kinds of delightful statement pieces, creating a beautifully balanced aesthetic. This color choice gives the room a relaxed and airy atmosphere that promotes a sense of tranquility and relaxation.

抹茶绿

以簇新的法式淡绿为空间带来轻松的生活气息，举重若轻的自然色调，适配所有令人愉悦的心动单品。

P151

www.klaxslab.com

DELICATE WHITE

The design is pure and subtle, with a surface that appears monochromatic at first glance, but upon closer inspection, reveals a rich interweaving of patterns such as fish scales and water ripples. The ever-changing angles of light create a dynamic display, with subtle sparkling diamond-like reflections that catch the eye.

细腻白

拥有纯净而不直白的设计，看似纯色的米肤色表面细看却是由鱼鳞纹、水波纹等各种图案交织而成，变幻角度更有星钻微闪的动态表现效果。

COLOUR LOOK

色彩系列

XO278S114OAR

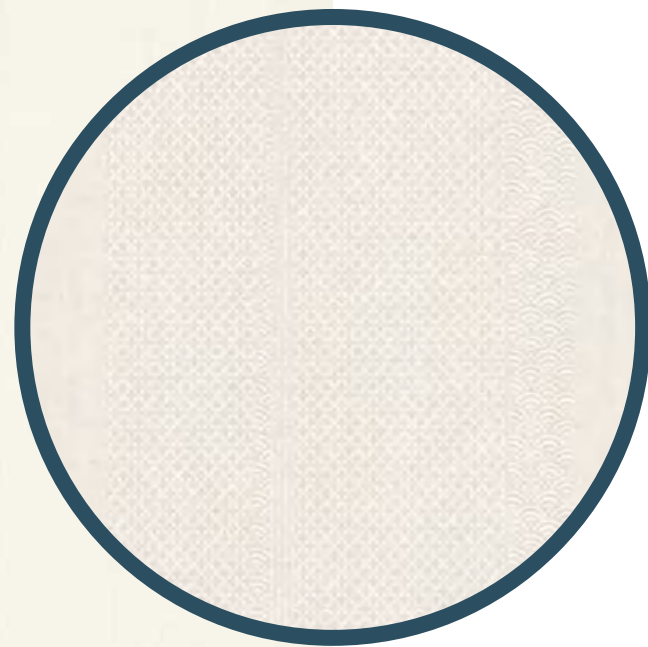
FORMAT
规格尺寸 /
800mm
2700mm

THICKNESS
厚度 /
9mm

SURFACE
表面质感 /
DIGITAL
STRUCTURE
HONED
丝绒面

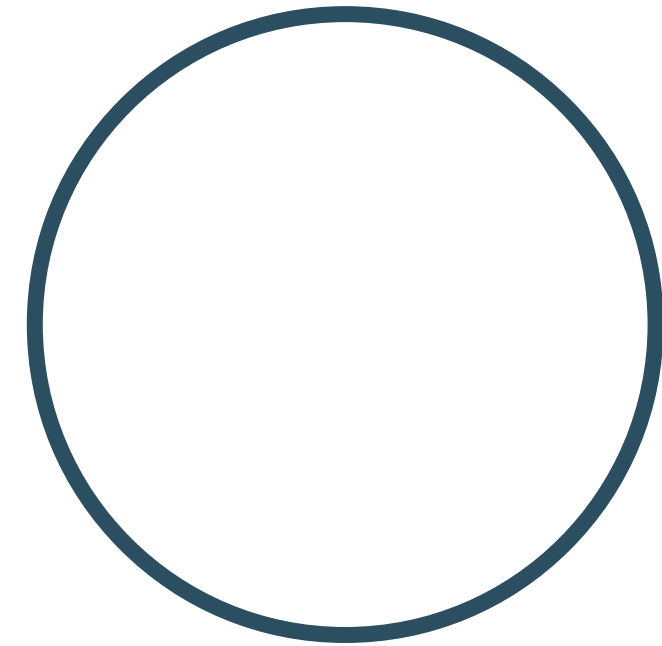
BODY 坯色 /
WHITE 白

FACES 版面 /
2 RANDOM
2 随机面



P152

www.klaxslab.com



WALL PAPER LOOK

壁纸系列

XO278S1127AS

FORMAT
规格尺寸 /
800mm
2700mm

THICKNESS
厚度 /
9mm

SURFACE
表面质感 /
DIGITAL
STRUCTURE
MATT
肌理面

BODY 坯色 /
WHITE
白

FACES 版面 /
4 RANDOM
4 随机面

DOLPHUR SAND

The delicate texture is hidden in the warmth, and the texture of sand and gravel that extends freely is exquisite but unassuming, natural and romantic, which can maximize the taste and temperament of the space.

多尔弗砂

细腻质感藏在温润当中，随心延伸的砂石纹理，精致而不张扬，自然而又浪漫，能最大程度凸显空间的品味和气质。

P153

www.klaxslab.com

LARICE SBIANCATO

The natural beauty of linen's color combined with the water-like fabric pattern creates a pure and timeless atmosphere on the walls, as if the soothing sound of waves crashing against the shore can be heard indoors. This adds a serene and tranquil ambiance to any space, making it an excellent choice for those seeking a peaceful and inviting environment.

拉里斯白

优美的亚麻原色和水波布纹效果，为墙面添加一种意味悠长却纯净无暇的氛围感，仿佛于室内听到海浪拍岸的美妙声音。

WALL PAPER LOOK

壁纸系列

XO278S1137AS

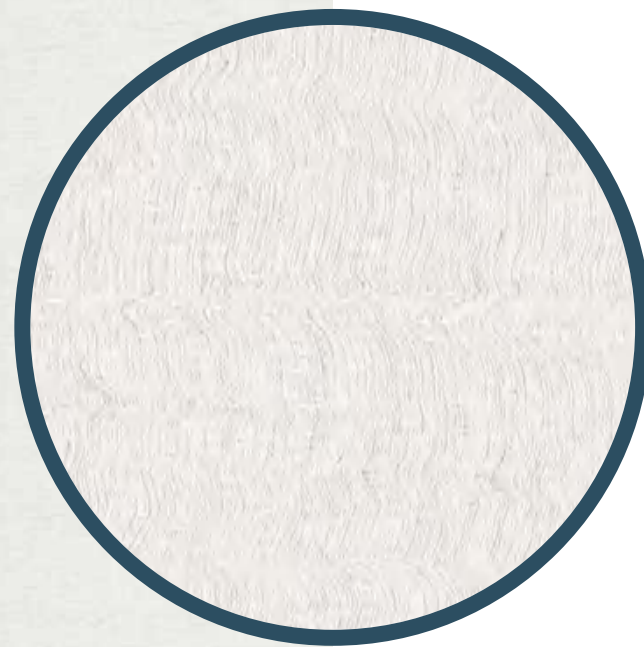
FORMAT
规格尺寸 /
800mm
2700mm

THICKNESS
厚度 /
9mm

SURFACE
表面质感 /
DIGITAL
STRUCTURE
MATT
星钻面

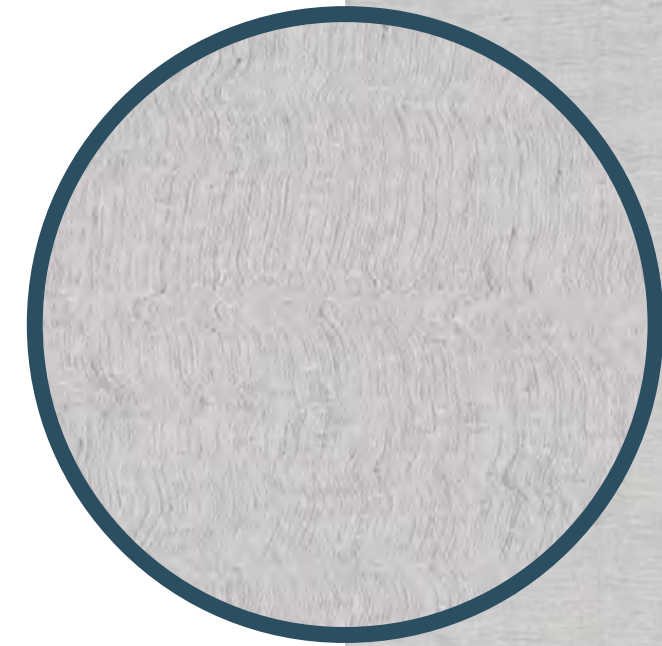
BODY 坯色 /
WHITE 白

FACES 版面 /
2 RANDOM
2 随机面



P154

www.klaxslab.com



WALL PAPER LOOK

壁纸系列

XO278S1138AS

FORMAT
规格尺寸 /
800mm
2700mm

THICKNESS
厚度 /
9mm

SURFACE
表面质感 /
DIGITAL
STRUCTURE
MATT
星钻面

BODY 坯色 /
LIGHT GREY
浅灰

FACES 版面 /
2 RANDOM
2 随机面

LARICE GREY

The subtle sheen of the silk-like light gray hue, paired with the undulating fabric pattern, imparts a sense of purity and timelessness to the walls, reminiscent of the serene sound of waves lapping at the shore within the room.

拉里斯灰

丝缎浅灰色调和水波布纹效果，为墙面添加一种意味悠长却纯净无暇的氛围感，仿佛于室内听到海浪拍岸的美妙声音。

P155

www.klaxslab.com

YORK BROWN

The finely crafted wallcovering mimics the texture of cotton-linen blend fabric, creating a delicate surface with a relaxed linen-like atmosphere. The rich brown hue adds a unique tropical flair, and when paired with light-colored marble or wood, it creates unexpected visual effects.

约克棕

精细稳定的工艺模拟棉麻混纺的壁布效果。棉麻混纺既有棉布的细腻表肌，又有亚麻的休闲氛围，醇厚的棕色带来别样热带风情，搭配浅色大理石或木质都可呈现意想不到的视觉效果。

WALL PAPER LOOK

壁纸系列

XO278S1129AS

FORMAT

规格尺寸 /
800mm
2700mm

THICKNESS

厚度 /
9mm

SURFACE

表面质感 /
DIGITAL
STRUCTURE
MATT
星钻面

BODY 坯色 /

LIGHT GREY
浅灰

FACES 版面 /

2 RANDOM
2 随机面



P156

www.klaxslab.com



WALL PAPER LOOK

壁纸系列

XO278S1128AS

FORMAT

规格尺寸 /
800mm
2700mm

THICKNESS

厚度 /
9mm

SURFACE

表面质感 /
DIGITAL
STRUCTURE
MATT
星钻面

BODY 坯色 /

LIGHT GREY
浅灰

FACES 版面 /

2 RANDOM
2 随机面

YORK GREY

The finely crafted wallcovering mimics the texture of cotton-linen blend fabric, combining the delicate surface of cotton with the relaxed atmosphere of linen. The perfect balance of warm and serene gray hues, coupled with subtle sparkling star-like patterns, creates varying visual effects depending on the lighting conditions.

约克灰

精细稳定的工艺模拟棉麻混纺的壁布效果。棉麻混纺既有棉布的细腻表肌，又有亚麻的休闲氛围，恰到好处灰度温婉宁静，若隐若现的星钻细闪在不同的灯光模式中予人不同的视觉感受。

P157

www.klaxslab.com

COMBI GREY

The geometric gradient pattern design and the harmonious beige-gray color make for an excellent choice for spaces seeking a refined and understated fashion sense with a touch of intellectual charm.

库比灰

几何渐变的图案设计和恰到好处的米灰色为追求书香气质和低调时髦感的空间带来一种上佳的选择，百搭而出彩。

WALL PAPER LOOK

壁纸系列

XO278S1139AS

FORMAT

规格尺寸 /
800mm
2700mm

THICKNESS

厚度 /
9mm

SURFACE

表面质感 /
DIGITAL
STRUCTURE
MATT
星钻面

BODY 坯色 /

WHITE 白

FACES 版面 /

4 RANDOM
4 随机面



P158

www.klaxslab.com





WALL
PAPER
LOOK

壁纸系列

XO278S1148AR-1/4

FORMAT
规格尺寸 /
800mm
2700mm

THICKNESS
厚度 /
9mm

SURFACE
表面质感 /
DIGITAL
STRUCTURE
HONED
丝绒面

BODY 坯色 /
WHITE 白

FACES 版面 /
4 SEAMLESS
MULTI-DIRECTIONAL
4片一组万向连纹

MIST
WHITE

The Chinese aesthetic design ignites the imagination, as the white marble is embellished with ethereal and ever-evolving blue-grey ink patterns that convey profound and far-reaching meanings. The all-encompassing interlocking design takes the spiritual realm of this artistic wall to new heights, revealing a world of endless possibilities.

云雾白

中式美学设计打开了想象空间，白色大理石搭载飘渺变幻的蓝灰云雾水墨图案，意向深远悠长。



WALL PAPER LOOK

壁纸系列

XQ278S1149ASR-1/3

FORMAT
规格尺寸 /
800mm
2700mm

THICKNESS
厚度 /
9mm

SURFACE
表面质感 /
DIGITAL
STRUCTURE
CRYSTAL
丝绒面

BODY 坯色 /
WHITE 白

FACES 版面 /
3 CONTINUOUS
3 片一组固定连纹

REED

The wide design with a fixed continuous pattern unveils the wondrous world of artistic wall mural, featuring a natural depiction of reeds that are artistically processed and colored. The meticulous attention to compatibility with commonly used materials allows it to shine as a remarkable masterpiece while seamlessly integrating into the overall ambiance of the space.

芦苇荡

固定连纹的宽幅设计开启了艺术壁画的美妙世界，它描摹芦苇的天然形态，在此基础上进行艺术加工与设色，作为精彩单品的同时也注意与常用材质的搭配性，最终为空间的整体感服务。



P165

www.klaxslab.com

ZEBRANO BLACK

The enigmatic black-grey design, adorned with stunning vertical-cut wood grain, evokes a fully-realized African style and a distinctive decorative ambiance, imbuing the space with a strong sense of FUSION.

泽布拉黑

神秘的黑灰色设计搭载美妙的纵切木纹，带来FUSION感十足的非洲风情，和独具一格的装饰氛围。

WOOD LOOK

木纹系列

XO278V1136AS

FORMAT
规格尺寸 /
800mm
2700mm

THICKNESS
厚度 /
9mm

SURFACE
表面质感 /
DIGITAL
STRUCTURE
MATT
肌理面

BODY 坯色 /
GREY 中灰

FACES 版面 /
2 SEAMLESS
MULTI-DIRECTIONAL
2片一组万向连纹

WOOD LOOK

木纹系列

XO278S1133AS

FORMAT
规格尺寸 /
800mm
2700mm

THICKNESS
厚度 /
9mm

SURFACE
表面质感 /
DIGITAL
STRUCTURE
MATT
肌理面

BODY 坯色 /
WHITE 白

FACES 版面 /
4 RANDOM
4 随机面

P166

www.klaxslab.com



TAMARACK GREY

The exquisite large-scale string-cut wood grain and versatile light grey color offer a fresh alternative for wall decor, creating a natural and invigorating ambiance with a firm and determined impression, while setting the foundation for an eco-friendly style in the space.

玛拉克灰

漂亮的大幅弦切木纹和百搭浅灰色，为墙面装饰提供一种新选择，清新自然，强韧坚定，奠定空间的生态格调。



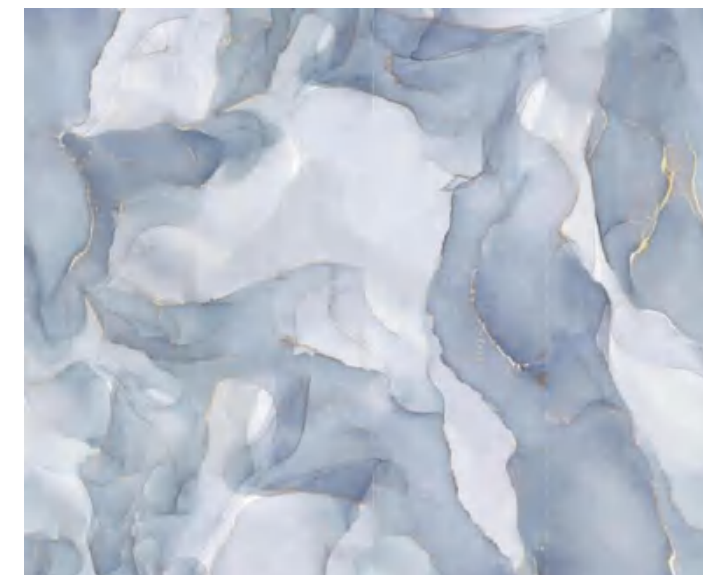
猎豹白
FUR WHITE
X0268V1130AH



猎豹黑
FUR BLACK
X0268V1131AH



猎豹棕
FUR BROWN
X0268V1132AH



清醒梦境
KLAXIMOOD
X0268V1101AH-1/4



幻日流光
KLAXICO
X0268V1100AH-1/5

800mm
2600mm

P169

www.klaxslab.com

FUR WHITE

The leather texture, combined with an abstract leopard print design, creates a dynamic flow of well-spaced warp and weft lines. Every detail is obscured from afar by the white diamond surface, lending a sense of mystery and allure to the overall elegance.

猎豹白

皮革质感搭载抽象豹纹设计，疏密有度的经纬线穿梭其中形成动态流向，一切细节以距离隐秘于白色星钻面之中，优雅之下，暗藏风情。

WALL PAPER LOOK

壁纸系列

XO268V1130AH

FORMAT

规格尺寸 /
800mm
2600mm

THICKNESS

厚度 /
9mm

SURFACE

表面质感 /
THIRD FIRING
星钻面

BODY 坯色 /

WHITE 白

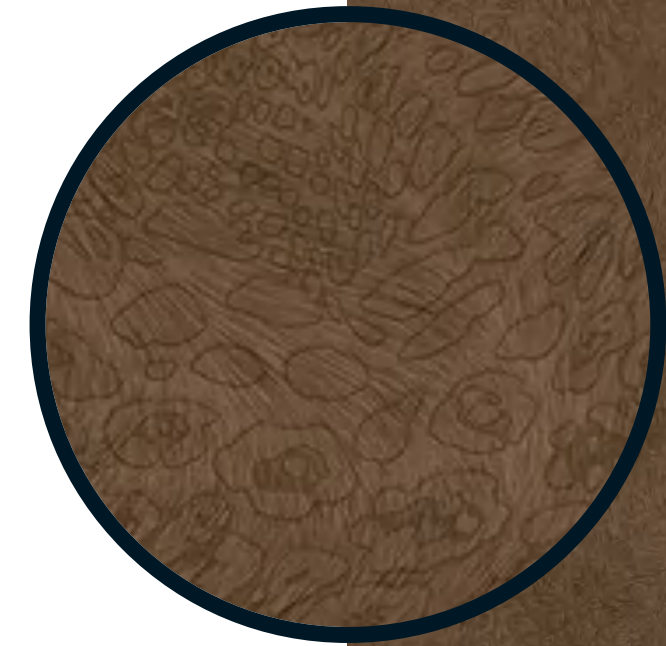
FACES 版面 /

SINGLE 单面



P170

www.klaxslab.com



WALL PAPER LOOK

壁纸系列

XO268V1132AH

FORMAT

规格尺寸 /
800mm
2600mm

THICKNESS

厚度 /
9mm

SURFACE

表面质感 /
THIRD FIRING
星钻面

BODY 坯色 /

WHITE 白

FACES 版面 /

SINGLE 单面

FUR BROWN

The leather texture, coupled with an abstract leopard print design, creates a dynamic flow of well-spaced warp and weft lines. Paired with the gold-brown diamond surface design, the decoration's opulence is fully unleashed, leaving no doubt about its luxuriousness.

猎豹棕

皮革质感搭载抽象豹纹设计，疏密有度的经纬线穿梭其中形成动态流向，搭配金棕色星钻面设计更使得装饰主义的华丽感充分释放，表露无疑。



FUR
WHITE

猎豹白



WALL
PAPER
LOOK

壁纸系列

X0268V1130AH

FORMAT
规格尺寸 /
800mm
2600mm

THICKNESS
厚度 /
9mm

SURFACE
表面质感 /
THIRD FIRING
星钻面

BODY 坯色 /
WHITE 白

FACES 版面 /
SINGLE 单面



**FUR
BROWN**

猎豹棕



**WALL
PAPER
LOOK**

壁纸系列

XO268V1132AH

FORMAT
规格尺寸 /
800mm
2600mm

THICKNESS
厚度 /
9mm

SURFACE
表面质感 /
THIRD FIRING
星钻面

BODY 坯色 /
WHITE 白

FACES 版面 /
SINGLE 单面

P175

www.klaxslab.com

FUR BLACK

The leather texture, paired with an abstract leopard print design, forms a dynamic flow of well-spaced warp and weft lines. The grey-black diamond surface enhances the design, radiating an unspoken yet palpable sense of opulence.

猎豹黑

皮革质感搭配抽象豹纹设计，疏密有度的经纬线穿梭其中形成动态流向，灰黑星钻面使其图案设计得以凸显，无需言语的高奢感油然而生。

WALL PAPER LOOK

壁纸系列

XO268V1131AH

FORMAT

规格尺寸 /
800mm
2600mm

THICKNESS

厚度 /
9mm

SURFACE

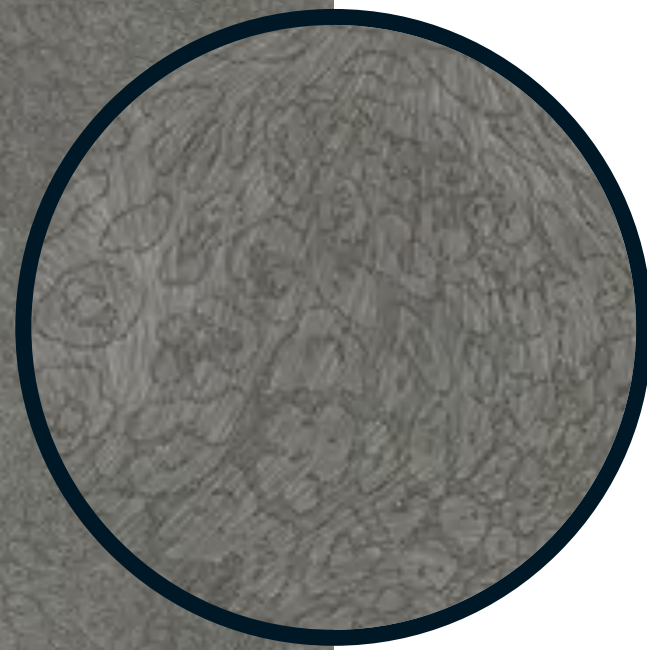
表面质感 /
THIRD FIRING
星钻面

BODY 坯色 /

WHITE 白

FACES 版面 /

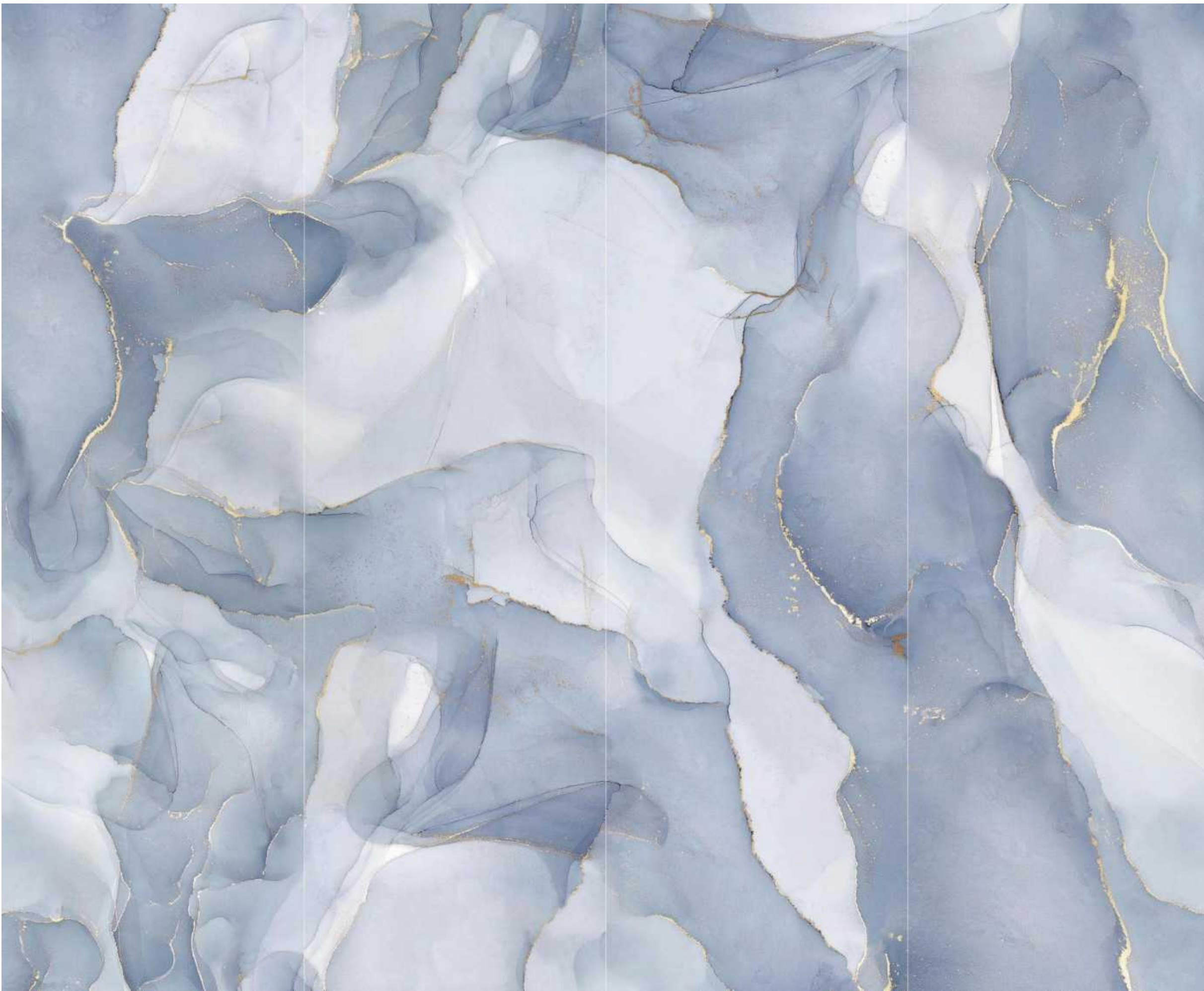
SINGLE 单面



P176

www.klaxslab.com





WALL PAPER LOOK

壁纸系列

XO268V1101AH-1/4

FORMAT
规格尺寸 /
800mm
2600mm

THICKNESS
厚度 /
9mm

SURFACE
表面质感 /
THIRD FIRING
星钻面

BODY 坯色 /
WHITE 白

FACES 版面 /
4 CONTINUOUS
SEAMLESS IN GROUP
4片一组左右连纹

KLAXI MOOD

The artwork explores the theme of "Dreamscape" by merging natural elements like the galaxy, aurora, sun, and clouds into abstract forms that ignite boundless imagination. The composition portrays a surreal dreamscape where these elements blend seamlessly, creating a captivating and immersive experience for the viewer.

清醒梦境

"梦境"为主题带来艺术壁画作品，银河、极光、太阳、云层，这些来自自然的元素在"梦境"中糅合为抽象的意向，生发出无限的想象力。



WALL PAPER LOOK

壁纸系列

XO268V1100AH-1/5

FORMAT
规格尺寸 /
800mm
2600mm

THICKNESS
厚度 /
9mm

SURFACE
表面质感 /
THIRD FIRING
星钻面

BODY 坯色 /
WHITE 白

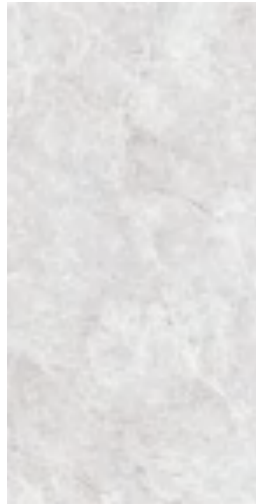
FACES 版面 /
5 CONTINUOUS
SEAMLESS IN GROUP
5片一组左右连纹

KLAXICO

The Illusory Flowing Sunlight exudes an artistic flair reminiscent of classical murals, with a seamless fusion of blue, yellow, gray, and gold hues that gradually blend into one another, unveiling a magnificent scroll imbued with the essence of creation. The painting evokes a sense of awe-inspiring grandeur, inviting the viewer to immerse themselves in its enchanting beauty.

幻日流光

幻日流光岩板带有古典壁画的艺术气息，蓝、黄、灰、金的配色经层层叠加层层晕染，渐渐展露出带有创世纪意向的恢弘画卷。



盖伊浅灰
KRATER
LIGHT GREY
X1890J1209ADP



塔索斯米黄
THASSOS BEIGE
X1890J1210ADP



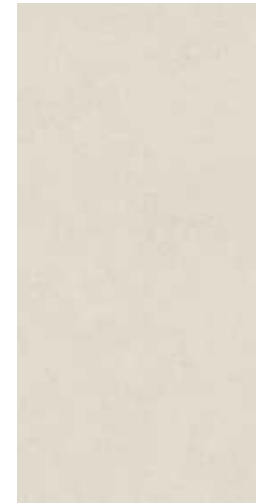
卡纳灰
KANA GREY
X1890J1180AP



艾维诺灰
AVENUE GREY
X1890J1211ADP



阿特拉斯银
ATLAS SKY
SILVER
X1890J1158AP



宝缇嘉米黄
BOTTEGA
BEIGE
X1890J1167ASP



宝缇嘉灰
BOTTEGA
GREY
X1890J1168ASP



尼奥灰
NEODY OXYD
X1890J1109ASP



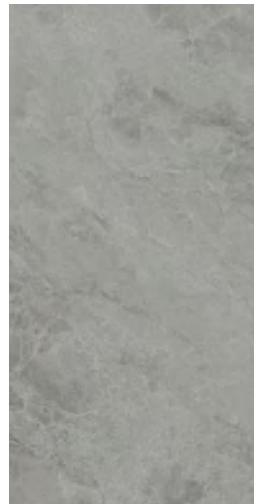
茵狄棕
INDIUM OXYD
X1890J1108ASP



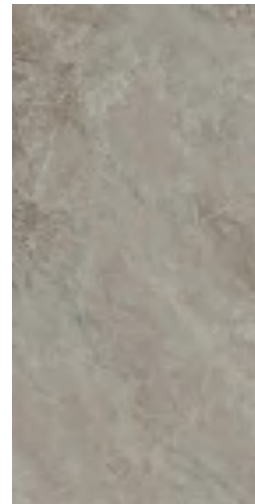
温纽浅灰
VENUSIAN
LIGHT GREY
X1890J1169AS



阿特拉斯灰
ATLAS CLOUD
SILVER
X1890J1159AP



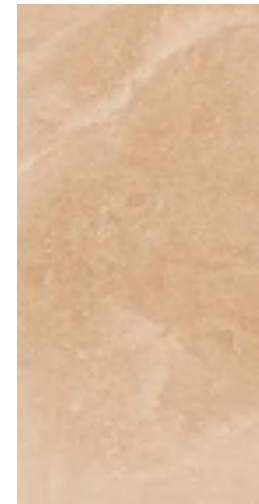
奥斯塔
AOSTA
X1890J1251YSN-1/6



奥斯塔
AOSTA
X1890J1252YSN-1/6



卡特白
KHALITE
GOLDEN ECRU
X1890J1174AL



卡特红
KHALITE
HIMALA PINK
X1890J1177AL



温纽灰
VENUSIAN GREY
X1890J1170AS



清杏色
KLAXICEM
PALE ALMOND
X1890J1117ASR



海豹灰
KLAXICEM
SEAL GREY
X1890J1119ASR



铁锚灰
KLAXICEM
ANCHOR GREY
X1890J1120ASR



木炭灰
KLAXICEM
CHARCOAL
GREY
X1890J1121ASR



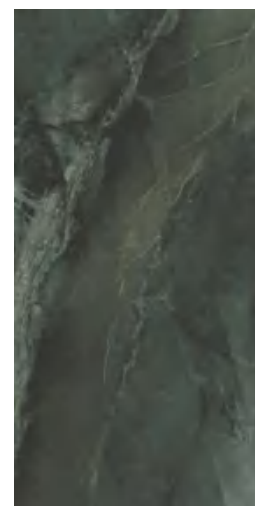
卡特浅灰
KHALITE
IVORY
CHAKRA
X1890J1175AL



卡特灰
KHALITE
DANGOLD
TAUPE
X1890J1176AL



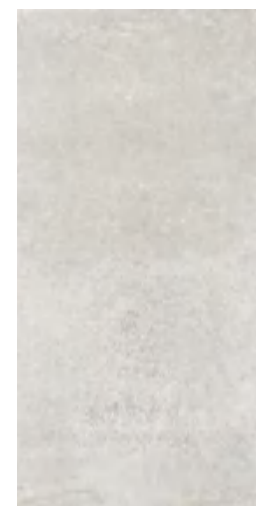
卡塔金
CALACATTA
ORO
X1890J1255YSR



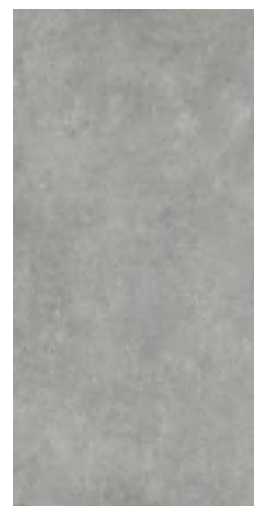
亚马逊
AMAZON
X1890J1256YSR



瓦尔登灰
WALDEN GREY
X1890J1212ADP-1/6



月光银
MOONBEAM
SILVER
X1890J1178AP



月光灰
MOONBEAM
WOLF
X1890J1179AP



奥罗拉
LORA
X1890J1268YSN



法国莱姆石
FRENCH
LIMESTONE
X1890J1269YSN



雾与弦
LANDSCAPE
X1890J1166AS-1/4

900mm
1800mm

P185

www.klaxslab.com

KRATER LIGHT GREY

The light gray background of the design is understated, yet strikingly beautiful, with a soft and evenly distributed pattern reminiscent of natural marble. Delicate, slightly white veins run horizontally and vertically like fissures, while deeper, dark gray veins add depth and enhance its beauty. The seamless fusion of these elements results in a captivating design that never loses its allure, a testament to the clever inspiration drawn from the wonders of nature.

盖伊浅灰

不声张的浅灰底色搭载柔和均匀的美丽大理石纹，微白如沟纵横裂变、深灰如谷渲染点睛，糅合勾勒却百看不腻，皆因灵感来自自然造物的巧妙构思。

MARBLE LOOK

大理石系列

X1890J1209ADP

FORMAT
规格尺寸 /
900mm
1800mm

THICKNESS
厚度 /
12mm

SURFACE
表面质感 /
DRY
GRANULE
LAPPATO
星钻面

BODY 坯色 /
WHITE 白

FACES 版面 /
4 RANDOM
4 随机面

MARBLE LOOK

大理石系列

X1890J1210ADP

FORMAT
规格尺寸 /
900mm
1800mm

THICKNESS
厚度 /
12mm

SURFACE
表面质感 /
DRY
GRANULE
LAPPATO
星钻面

BODY 坯色 /
WHITE 白

FACES 版面 /
4 RANDOM
4 随机面

P186

www.klaxslab.com

THASSOS BEIGE

The use of a soft, pinkish-beige color palette effectively counterbalances the inherent coldness of the marble texture. The fine, irregular, and varying shades of lines provide a sense of balance to the surface design, enhancing its durability and making it more visually appealing to onlookers, drawing them in closer.

塔索斯米黄

粉调米黄的柔和色中和了大理石的冰冷质感，无规则、深浅不一的细小纹理使版面设计更加平衡耐看，使人不由得亲近。





**THASSOS
BEIGE**

塔索斯米黄



**MARBLE
LOOK**

大理石系列

X1890J1210ADP

FORMAT
规格尺寸 /
900mm
1800mm

THICKNESS
厚度 /
12mm

SURFACE
表面质感 /
DRY
GRANULE
LAPPATO
星钻面

BODY 坯色 /
WHITE 白

FACES 版面 /
4 RANDOM
4 随机面

P189

www.klaxslab.com

KANA GREY

Despite lacking elaborate patterns or striking color designs, when applied on a large scale, it exudes such harmony and appeal that its charm remains undiminished over time.

卡纳灰

没有华丽的图案和深邃夺目的颜色设计，但大面积应用时，它如此和谐，魅力不随时间而消退。

MARBLE LOOK

大理石系列

X1890J1180AP

FORMAT
规格尺寸 /
900mm
1800mm

THICKNESS
厚度 /
12mm

SURFACE
表面质感 /
DRY
GRANULE
LAPPATO
星钻面

BODY 坯色 /
WHITE 白

FACES 版面 /
4 RANDOM
4 随机面

MARBLE LOOK

大理石系列

X1890J1211ADP

FORMAT
规格尺寸 /
900mm
1800mm

THICKNESS
厚度 /
12mm

SURFACE
表面质感 /
DRY
GRANULE
LAPPATO
星钻面

BODY 坯色 /
WHITE 白

FACES 版面 /
6 RANDOM
6 随机面

P190

www.klaxslab.com

AVENUE GREY

Through the skillful integration of terrazzo and marble patterns, along with the incorporation of unique decorative designs, this item achieves a timeless and fashionable appeal that does not diminish even when applied on a large scale.

艾维诺灰

将水磨石与大理石纹巧妙结合，独特的装饰图案恰到好处，大面积应用时，它既是无时限的时髦好物，又不会泯然于众人。



**AVENUE
GREY**

艾维诺灰



**MARBLE
LOOK**

大理石系列

X1890J1211ADP

FORMAT

规格尺寸 /
900mm
1800mm

THICKNESS

厚度 /
12mm

SURFACE

表面质感 /
DRY
GRANULE
LAPPATO
星钻面

BODY 坯色 /

WHITE 白

FACES 版面 /

6 RANDOM
6 随机面

P193

www.klaxslab.com

ATLAS SKY SILVER

Despite lacking elaborate patterns or striking color designs, when applied on a large scale, it exudes such harmony and appeal that its charm remains undiminished over time.

阿特拉斯银

白日星空的幻想，石材纹理织画出迷雾弥漫中群星流动的景象，丝滑的灰色渐变呈现出星空的变幻游移，衍生出一种浪漫的趣味。

MARBLE LOOK

大理石系列

X1890J1158AP

FORMAT
规格尺寸 /
900mm
1800mm

THICKNESS
厚度 /
12mm

SURFACE
表面质感 /
DRY
GRANULE
LAPPATO
肌理面

BODY 坯色 /
LIGHT GREY
浅灰

FACES 版面 /
6 RANDOM
6 随机面

MARBLE LOOK

大理石系列

X1890J1159AP

FORMAT
规格尺寸 /
900mm
1800mm

THICKNESS
厚度 /
12mm

SURFACE
表面质感 /
DRY
GRANULE
LAPPATO
肌理面

BODY 坯色 /
LIGHT GREY
浅灰

FACES 版面 /
6 RANDOM
6 随机面

P194

www.klaxslab.com

ATLAS CLOUD SILVER

The moment of nightfall is evoked through the texture of the stone, which weaves a stunning image of the winding Milky Way and shimmering stars in the night sky. The deep, mysterious, and tranquil dark gray base color enhances the space's ability to naturally emanate an imaginative and far-off feeling.

阿特拉斯灰

夜幕降临时刻的联想，石材纹理织画出夜空中银河蜿蜒璀璨的景象，深灰底色神秘而静谧，使空间自然悠远散发想象力。

P195

www.klaxslab.com

WALDEN GREY

Through the use of bold blue-gray tones and intricate marble patterns that flow seamlessly, a visually striking and dynamic effect is achieved. The negative space, rather than being an afterthought, is cleverly incorporated as a decorative element.

瓦尔登灰

大胆的青灰调大理石花纹经万象连纹设计，串联出风起云涌的视觉效果，留白反而成为一种装饰。

MARBLE LOOK

大理石系列

X1890J1212ADP-1/6

FORMAT
规格尺寸 /

900mm
1800mm

THICKNESS
厚度 /

12mm

SURFACE
表面质感 /

DRY
GRANULE
LAPPATO
星钻面

BODY 坯色 /
WHITE 白

FACES 版面 /
6 SEAMLESS
MULTI-DIRECTIONAL
6片一组万向连纹

MARBLE LOOK

大理石系列

X1890J1256YSR

FORMAT
规格尺寸 /

900mm
1800mm

THICKNESS
厚度 /

12mm

SURFACE
表面质感 /

STRUCTURE
肌理面

BODY 坯色 /
LIGHT GREY
浅灰

FACES 版面 /
6 RANDOM
6随机面

P196

www.klaxslab.com

AMAZON

The dark and mystical design of Amazon slate adds an enchanting touch to any space. Its low brightness and low saturation design allow bold patterns to blend seamlessly with other elements, all working together to create a cohesive and enhanced overall space.

亚玛逊

暗夜精灵般的设计，使亚玛逊岩板出现在任何一个空间，都成为点睛之笔，因其低明度低饱和度设计，即使图案如此大胆，却总能与其他元素和谐共存，共同为整体空间服务。

P199

www.klaxslab.com

KHALITE IVORY CHAKRA

Embark on a journey through the foggy city, where the misty air creates a surface of soft, light grey tones. As you travel through this ethereal atmosphere, the interplay of light and shadow reveals the mesmerizing beauty of the eroded rock, with its intricate textures and patterns. The result is a captivating experience that transports you to another world, one where the delicate balance of nature is on full display.

卡特浅灰

雾都之旅，穿越雾气弥漫的浅灰调氛围表层，在光影的叠加中重现蚀刻岩石的美丽肌理。



MARBLE LOOK

大理石系列

X1890J1175AL

FORMAT
规格尺寸 /
900mm
1800mm

THICKNESS
厚度 /
12mm

SURFACE
表面质感 /
DRY
GRANULE
MATT
星钻面

BODY 坯色 /
WHITE 白

FACES 版面 /
8 RANDOM
8 随机面

P200

www.klaxslab.com



P201

www.klaxslab.com

KHALITE DANGOLD TAUPE

Embark on a journey through the foggy city, where a layer of mist shrouds the surface in a soft grey tone. As you travel through this ethereal atmosphere, the interplay of light and shadow reveals the stunning beauty of the eroded rock's texture and patterns. The subtle balance of nature on display is a sight to behold, transporting you to a world of tranquility and serenity.

卡特灰

雾都之旅，穿越雾气弥漫的灰调氛围表层，在光影的叠加中重现蚀刻岩石的美丽肌理。

MARBLE LOOK

大理石系列

X1890J1176AL

FORMAT
规格尺寸 /
900mm
1800mm

THICKNESS
厚度 /
12mm

SURFACE
表面质感 /
DRY
GRANULE
MATT
星钻面

BODY 坯色 /
LIGHT GREY
浅灰

FACES 版面 /
8 RANDOM
8 随机面

P202

www.klaxslab.com



P207

www.klaxslab.com

KHALITE GOLDEN ECRU

Embark on a journey through the misty city, where the elusive mist and clouds create a mesmerizing display of patterned textures on the rocky surface. The layers and blend of the fog produce an extraordinary and otherworldly atmosphere, leaving a lasting impression on anyone who experiences it.

卡特白

雾都之旅，若隐若现的氤氲云雾，以图案纹理的方式呈现于岩板上，层叠晕染，超凡脱俗。

MARBLE LOOK

大理石系列

X1890J1174AL

FORMAT
规格尺寸 /
900mm
1800mm

THICKNESS
厚度 /
12mm

SURFACE
表面质感 /
DRY
GRANULE
MATT
星钻面

BODY 坯色 /
WHITE 白

FACES 版面 /
8 RANDOM
8 随机面



P208

www.klaxslab.com



MARBLE LOOK

大理石系列

X1890J1255YSR

FORMAT
规格尺寸 /
900mm
1800mm

THICKNESS
厚度 /
12mm

SURFACE
表面质感 /
STRUCTURE
肌理面

BODY 坯色 /
WHITE 白

FACES 版面 /
5 RANDOM
5 随机面

CALACATTA ORO

By dividing gold element into two elements, the design is reborn with a fresh and daring artistic effect. This is achieved by carefully balancing different proportions of combinations, and skillfully integrating color blocks and textures with varying depths. The result is a completely new and captivating creation, one that showcases the beauty of balance and harmony in design.

卡塔金

黄与金割裂为两种元素，通过分配不同比例的组合及融入不同深浅的色块与纹理进行重新设计，呈现为全新而大胆的艺术效果。



CALACATTA
ORO

卡塔金



MARBLE
LOOK

大理石系列

X1890J1255YSR

FORMAT

规格尺寸 /
900mm
1800mm

THICKNESS

厚度 /
12mm

SURFACE

表面质感 /
STRUCTURE
肌理面

BODY 坯色 /

WHITE 白

FACES 版面 /

5 RANDOM
5 随机面

P211

www.klaxslab.com

AOSTA

The design is inspired by the multi-faceted shades of grey marble and the extended time dimension of its formation in the mines. These unique qualities are intricately woven into the rich texture of the rock surface design, bringing radiance and depth to indoor spaces. The universal veining design further amplifies the overall decorative effect, creating an elegant and timeless atmosphere that is sure to leave a lasting impression.

奥斯塔

设计灵感采集自风情万种的灰色调大理石，矿山生长的漫长时间维度，都印刻在岩板版面设计的丰富纹理中，令室内空间熠熠生辉，万向连纹设计更放大了这种装饰效果。

MARBLE LOOK

大理石系列

X1890J1251YSN-1/6

FORMAT
规格尺寸 /
900mm
1800mm

THICKNESS
厚度 /
12mm

SURFACE
表面质感 /
REALISTIC
MATT
肌理面

BODY 坯色 /
LIGHT GREY
浅灰

FACES 版面 /
6 SEAMLESS
MULTI-DIRECTIONAL
6片一组万向连纹

MARBLE LOOK

大理石系列

X1890J1252YSN-1/6

FORMAT
规格尺寸 /
900mm
1800mm

THICKNESS
厚度 /
12mm

SURFACE
表面质感 /
REALISTIC
MATT
肌理面

BODY 坯色 /
LIGHT GREY
浅灰

FACES 版面 /
6 SEAMLESS
MULTI-DIRECTIONAL
6片一组万向连纹

P212

www.klaxslab.com

AOSTA

The design draws inspiration from the diverse shades of grey marble and the extended time it takes to form in the mines. These unique qualities are intricately woven into the rich texture of the rock surface design, bringing radiance and depth to indoor spaces. The universal veining design further amplifies the overall decorative effect, creating an elegant and timeless atmosphere that is sure to leave a lasting impression on anyone who experiences it.

奥斯塔

设计灵感采集自风情万种的灰色调大理石，矿山生长的漫长时间维度，都印刻在岩板版面设计的丰富纹理中，令室内空间熠熠生辉，万向连纹设计更放大了这种装饰效果。

P213

www.klaxslab.com

LORA

Aurora was inspired by the goddess of Dawn in Roman mythology, who was in charge of the morning light. Chenguang is a beautiful gift from nature to mankind, and Aurora is a goddess full of hope and expectation.

奥罗拉

奥罗拉灵感源自罗马神话中掌管晨光的黎明女神。欧若拉罗马神话中掌管黎明、曙光的女神，晨光大自然赐给人类的美好礼物，欧若拉则是令人充满希望与期盼的女神。

MARBLE LOOK

大理石系列

XI890J1268YSN

FORMAT

规格尺寸 /
900mm
1800mm

THICKNESS

厚度 /
12mm

SURFACE

表面质感 /
REALISTIC
MATT
肌理面

BODY 坯色 /

WHITE 白

FACES 版面 /

6 RANDOM
6 随机面

P214

www.klaxslab.com



P215

www.klaxslab.com

FRENCH LIMESTONE

French limestone is inspired by the Louvre Museum in France during the European classicism period. As one of the largest palace buildings in France, Lime stone is extensively used on the eastern facade, which has become a representative work of European classicism architecture.

法国莱姆石

法国莱姆石灵感源自欧洲古典主义时期法国的卢浮宫作为法国最大的王宫建筑之一，东立面大量使用莱姆石，得以造就今日的历史感和尊贵格调，成为欧洲古典主义时期建筑的代表作品。背景墙均由莱姆石堆砌而成，女神展翅欲飞的雄姿在历经时光沉淀、天然高贵的莱姆石映衬下，更显得历史厚重感。



STONE LOOK

岩石系列

XI890J1269YSN

FORMAT

规格尺寸 /
900mm
1800mm

THICKNESS

厚度 /
12mm

SURFACE

表面质感 /
REALISTIC
MATT
肌理面

BODY 坯色 /

WHITE 白

FACES 版面 /

4 RANDOM
4 随机面

P216

www.klaxslab.com



P219

www.klaxslab.com

BOTTEGA GREY

The terrazzo has a gray-tone temperament and is composed of aggregates like glass and quartz, which are blended in with very fine diameters. The composite texture of star diamonds becomes increasingly stunning as one approaches, resulting in an architectural interior style that is full of character.

宝缇嘉灰

气质感灰色调水磨石，玻璃、石英石等骨料以非常细粒的粒径夹杂其中，星钻质面展现愈近愈美的复合肌理，铺设出建筑感十足的室内格调。

CEMENT LOOK

水泥系列

X1890J1168ASP

FORMAT
规格尺寸 /
900mm
1800mm

THICKNESS
厚度 /
12mm

SURFACE
表面质感 /
DIGITAL
STRUCTURE
LAPPATO
星钻面

BODY 坯色 /
GREY 中灰

FACES 版面 /
4 RANDOM
4 随机面

CEMENT LOOK

水泥系列

X1890J1167ASP

FORMAT
规格尺寸 /
900mm
1800mm

THICKNESS
厚度 /
12mm

SURFACE
表面质感 /
DIGITAL
STRUCTURE
LAPPATO
星钻面

BODY 坯色 /
WHITE 白

FACES 版面 /
4 RANDOM
4 随机面

P220

www.klaxslab.com



BOTTEGA BEIGE

The terrazzo has a charming beige temperament, with glass and quartz aggregates mixed in with fine diameters. The composite texture of star diamonds becomes more breathtaking as one approaches, creating a design that is both elegant and simple, with a rich texture.

宝缇嘉米黄

气质感米色调水磨石，玻璃、石英石等骨料以非常细粒的粒径夹杂其中，星钻质面展现愈近愈美的复合肌理，朴而有华，质感丰富。





**BOTTEGA
GREY**

宝缇嘉灰



**CEMENT
LOOK**

水泥系列

X1890J1168ASP

FORMAT

规格尺寸 /
900mm
1800mm

THICKNESS

厚度 /
12mm

SURFACE

表面质感 /
DIGITAL
STRUCTURE
LAPPATO
星钻面

BODY 坯色 /

GREY 中灰

FACES 版面 /

4 RANDOM
4 随机面

P223

www.klaxslab.com

MOONBEAM SILVER

The terrazzo has a gray-tone temperament and is composed of aggregates like glass and quartz, which are blended in with very fine diameters. The composite texture of star diamonds becomes increasingly stunning as one approaches, resulting in an architectural interior style that is full of character.

月光银

气质感灰色调水磨石，玻璃、石英等骨料以非常细粒的粒径夹杂其中，星钻质面展现愈近愈美的复合肌理，铺设出建筑感十足的室内格调。

CEMENT LOOK

水泥系列

X1890J1178AP

FORMAT
规格尺寸 /
900mm
1800mm

THICKNESS
厚度 /
12mm

SURFACE
表面质感 /
DRY
GRANULE
LAPPATO
星钻面

BODY 坯色 /
LIGHT GREY
浅灰

FACES 版面 /
5 RANDOM
5 随机面

CEMENT LOOK

水泥系列

X1890J1179AP

FORMAT
规格尺寸 /
900mm
1800mm

THICKNESS
厚度 /
12mm

SURFACE
表面质感 /
DRY
GRANULE
LAPPATO
星钻面

BODY 坯色 /
LIGHT GREY
浅灰

FACES 版面 /
5 RANDOM
5 随机面

P224

www.klaxslab.com

MOONBEAM WOLF

By adding metal particles to simulate cement and combining them with irregular materials and star diamond surfaces, a mesmerizing artistic effect is created, evoking the image of a faintly shimmering night sky that is both magical and profound.

月光灰

模拟水泥中添加金属粒子的艺术效果，不规则的材质混合加之星钻质面，呈现出隐隐约约的夜幕星空效果，奇妙而深远。



P225

www.klaxslab.com

VENUSIAN LIGHT GREY

The decorative design is both simple and elegant, with richly textured details featuring an abstract wave pattern reminiscent of the unique brushstrokes found in artistic paint. The soft and light gray tone evokes a natural and unpretentious feel while still maintaining a high level of detail.

温纽浅灰

素雅淳朴的装饰性及肌理丰富的细节效果，抽象的波浪图案酷似艺术涂料的独特“刷痕”，柔和浅灰返璞归真，不失细节。

CEMENT LOOK

水泥系列

X1890J1169AS

FORMAT
规格尺寸 /
900mm
1800mm

THICKNESS
厚度 /
12mm

SURFACE
表面质感 /
DIGITAL
STRUCTURE
MATT
星钻面

BODY 坯色 /
LIGHT GREY
浅灰

FACES 版面 /
4 RANDOM
4 随机面

CEMENT LOOK

水泥系列

X1890J1170AS

FORMAT
规格尺寸 /
900mm
1800mm

THICKNESS
厚度 /
12mm

SURFACE
表面质感 /
DIGITAL
STRUCTURE
MATT
星钻面

BODY 坯色 /
GREY 中灰

FACES 版面 /
4 RANDOM
4 随机面

VENUSIAN GREY

The decorative design is both simple and elegant, with richly textured details featuring an abstract wave pattern that resembles the unique brushstrokes found in artistic paint. The thick and dark gray tone creates a natural and unpretentious look while simultaneously enhancing the level of detail.

温纽灰

素雅淳朴的装饰性及肌理丰富的细节效果，抽象的波浪图案酷似艺术涂料的独特“刷痕”，厚重深灰返璞归真，加深细节。

P226

www.klaxslab.com



P229

www.klaxslab.com

NEODY OXYD

This design imitates the intriguing changes that occur when metals undergo chemical reactions that cause them to corrode and change color. The realistic and gradual deep gray metal gradient effect, combined with the irregular corroded texture, creates a sense of depth and complexity, evoking the vastness of the universe. This makes it the perfect choice for creating an industrial-style space with a distinctive character.

尼奥灰

模拟了金属经化学反应腐蚀变色的奇妙变化，逼真的深灰色金属渐变效果及不规则的腐蚀肌理呈现出深邃的宇宙感，是搭建工业风空间的不二选择。



METAL LOOK

金属系列

X1890J1109ASP

FORMAT
规格尺寸 /
900mm
1800mm

THICKNESS
厚度 /
12mm

SURFACE
表面质感 /
DIGITAL
STRUCTURE
LAPPATO
肌理面

BODY 坯色 /
GREY 中灰

FACES 版面 /
4 RANDOM
4 随机面

METAL LOOK

金属系列

X1890J1108ASP

FORMAT
规格尺寸 /
900mm
1800mm

THICKNESS
厚度 /
12mm

SURFACE
表面质感 /
DIGITAL
STRUCTURE
LAPPATO
肌理面

BODY 坯色 /
GREY 中灰

FACES 版面 /
4 RANDOM
4 随机面

P230

www.klaxslab.com



INDIUM OXYD

This design simulates the fascinating changes that occur when metals undergo chemical reactions that cause them to corrode and change color. The realistic and gradual antique bronze metal gradient effect, combined with the irregular corroded texture, creates a sense of depth and complexity that evokes the vastness of the universe. It is the ideal choice for creating an industrial-style space with a unique character.

茵狄棕

模拟了金属经化学反应腐蚀变色的奇妙变化，逼真的古铜色金属渐变效果及不规则的腐蚀肌理呈现出深邃的宇宙感，是搭建工业风空间的不二选择。

P233

www.klaxslab.com

KLAXICEM PALE ALMOND

This pure base is specifically designed to complement a wide range of different styles and designs. It not only embodies exceptional quality, but also serves as a beautiful companion to enhance visual aesthetics.

清杏色

纯净基底，它为各种不同格调的设计搭配而生，既是品质担当，又是颜值伴侣。

COLOUR LOOK

色彩系列

X1890J1117ASR

FORMAT
规格尺寸 /
900mm
1800mm

THICKNESS
厚度 /
12mm

SURFACE
表面质感 /
DIGITAL
STRUCTURE
CRYSTAL
星钻面

BODY 坯色 /
WHITE 白

FACES 版面 /
3 RANDOM
3 随机面

COLOUR LOOK

色彩系列

X1890J1119ASR

FORMAT
规格尺寸 /
900mm
1800mm

THICKNESS
厚度 /
12mm

SURFACE
表面质感 /
DIGITAL
STRUCTURE
CRYSTAL
星钻面

BODY 坯色 /
LIGHT GREY
浅灰

FACES 版面 /
3 RANDOM
3 随机面

KLAXICEM SEAL GREY

The board surface is soft and smooth, with a deep shade of grey and small, intricately designed holes that add depth to its pure color. Despite its minimalist aesthetic, it avoids monotony and exudes a subtle elegance.

海豹灰

柔滑的深灰色板面，纯净色泽中夹杂细小空洞设计，极简却丝毫不感单调。

P234

www.klaxslab.com



P235

www.klaxslab.com

KLAXICEM ANCHOR GREY

The surface is smooth and pure grey, its simplicity is all-encompassing. Its understated strength lies in its ability to make room for other objects and elevate the space with a serene and tranquil visual experience. Its durability and unpretentious nature make it a perfect backdrop for any design aesthetic, allowing it to seamlessly integrate into any environment.

铁锚灰

平滑的灰色纯色表面，大道至简，海纳百川。坚韧质朴，让位于它物，令空间在宁静的视觉感受中升华。

COLOUR LOOK

色彩系列

X1890J1120ASR

FORMAT

规格尺寸 /
900mm
1800mm

THICKNESS

厚度 /
12mm

SURFACE

表面质感 /
DIGITAL
STRUCTURE
CRYSTAL
星钻面

BODY 坯色 /

LIGHT GREY
浅灰

FACES 版面 /

3 RANDOM
3 随机面

COLOUR LOOK

色彩系列

X1890J1121ASR

FORMAT

规格尺寸 /
900mm
1800mm

THICKNESS

厚度 /
12mm

SURFACE

表面质感 /
DIGITAL
STRUCTURE
CRYSTAL
星钻面

BODY 坯色 /

LIGHT GREY
浅灰

FACES 版面 /

3 RANDOM
3 随机面

P236

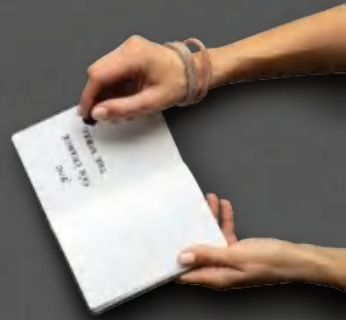
www.klaxslab.com

KLAXICEM CHARCOAL GREY

The board surface is smooth and light grey, with a subtle elegance that appears effortless yet not frivolous. It fearlessly meets the spatial design requirements of various functions and aesthetics, providing a versatile and adaptable solution for any space. Whether in a contemporary or traditional setting, its unassuming presence allows it to seamlessly blend in while adding a touch of sophistication.

木炭灰

光滑的浅灰色板面，轻松却不显轻佻，无惧满足不同功能、不同审美的空间搭配需求。





幻影白
PHANTOM
WHITE
X0126V1221YS



珫琅白
ENAMEL
WHITE
X0126V1222YS



清江玉
LIMPID GREEN
X0126V1219YD



卡特浅灰
KHALITE
IVORY
CHAKRA
X0126V1225YN



普洛斯
PULLOS
X0126V1220YDP



科罗塔那白
COROTANA
WHITE
X0126V1223YS



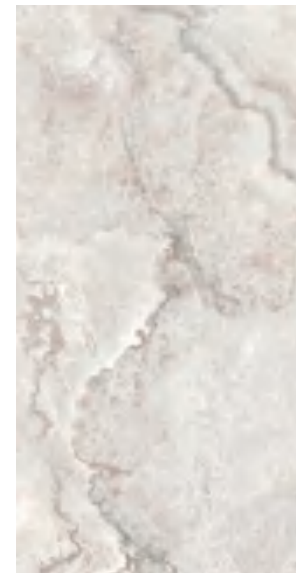
奥兰卡
OULANKA
BEIGE
X0126V1217YDP



纳维亚
NAEVIA
WHITE
X0126V1224YS



寒江雪
NEVE FREDDA
WHITE
X0126V1216YD



波西米亚
BOHEMIA
X0126V1218YSR



撒丁砾石
BRECCIA
SARDA
GREY
X0126V1226YSR

600mm
1200mm

P241

www.klaxslab.com

NEVE FREDDA WHITE

The base color is an unconventional shade of grey-brown, complemented by irregular branch-like patterns that create a striking contrast. The six-piece continuous pattern forms a grand landscape painting screen, exuding an air of elegance and grandeur. The unique combination of color and texture makes it a captivating centerpiece in any space, adding depth and character to its surroundings.

寒江雪

脱俗的灰米色调为底，上附不规则的枝杈形纹理，六片连续设计呈现巨幅山水画屏，雅致兰心，气势恢宏。

MARBLE LOOK

大理石系列

X0126V1216YD

FORMAT
规格尺寸 /
600mm
1200mm

THICKNESS
厚度 /
9mm

SURFACE
表面质感 /
STRUCTURE
星钻面

BODY 坯色 /
WHITE 白

FACES 版面 /
6 RANDOM
6 随机面

MARBLE LOOK

大理石系列

X0126V1221YS

FORMAT
规格尺寸 /
600mm
1200mm

THICKNESS
厚度 /
9mm

SURFACE
表面质感 /
STRUCTURE
肌理面

BODY 坯色 /
WHITE 白

FACES 版面 /
6 RANDOM
6 随机面

P242

www.klaxslab.com

PHANTOM WHITE

Drawing inspiration from the majestic veins and pure white base color of Carrara marble, the Kelai Shi Phantom White Stone Board takes artistic creativity to new heights, resulting in a surreal and dreamlike appearance. Its intricate patterns and textures are a testament to the skilled craftsmanship and attention to detail that went into its creation, making it a stunning and unique addition to any space.

幻影白

沿袭卡拉卡塔系大理石大气的纹路与洁白底色，在此基础上进行艺术发挥，形成了似真似幻的凯莱仕幻影白岩板。



**PHANTOM
WHITE**

幻影白



**MARBLE
LOOK**

大理石系列

XO126VI221YS

FORMAT
规格尺寸 /
600mm
1200mm

THICKNESS
厚度 /
9mm

SURFACE
表面质感 /
STRUCTURE
肌理面

BODY 坯色 /
WHITE 白

FACES 版面 /
6 RANDOM
6 随机面

P245

www.klaxslab.com

OULANKA BEIGE

The light yellow base color evokes the timeless beauty of an ancient scroll, while the stone texture flows down from the top, capturing the dynamic movement of rivers and mountains in the three-piece continuous pattern. This stunning design is not only inspired by the natural world, but also the result of expert craftsmanship, with every detail crafted to perfection. The overall effect is a mesmerizing work of art that brings the beauty of nature into any space.

奥兰卡

淡黄底色似经久不衰的古老画卷，若隐若现的石材纹理自上倾泻而下，将河流山川的动态凝固于三片连续形成的画幅之中，是自然赋予的灵感也是巧夺天工的匠心。

MARBLE LOOK

大理石系列

XO126V1217YDP

FORMAT
规格尺寸 /
600mm
1200mm

THICKNESS
厚度 /
9mm

SURFACE
表面质感 /
DIGITAL
STRUCTURE
LAPPATO
星钻面

BODY 坯色 /
WHITE 白

FACES 版面 /
6 RANDOM
6 随机面

MARBLE LOOK

大理石系列

XO126V1222YS

FORMAT
规格尺寸 /
600mm
1200mm

THICKNESS
厚度 /
9mm

SURFACE
表面质感 /
STRUCTURE
肌理面

BODY 坯色 /
WHITE 白

FACES 版面 /
6 RANDOM
6 随机面

P246

www.klaxslab.com



ENAMEL WHITE

The grey-white base of this design is enhanced with a striking new element - large grey marble patterns that create a captivating visual focal point. Additionally, there are also finer pattern styles with more negative space to choose from, offering a range of design options to suit different tastes and styles. Whether you choose the bold, attention-grabbing design or the more subtle, understated patterns, this surface is sure to make a statement in any space.

珐琅白

灰白底色上设计出新，大块灰色大理石纹形成极富视觉冲击力的焦点元素，也有留白更多的细纹款式可供挑选。



**ENAMEL
WHITE**

珐琅白



**MARBLE
LOOK**

大理石系列

XO126VI222YS

FORMAT
规格尺寸 /
600mm
1200mm

THICKNESS
厚度 /
9mm

SURFACE
表面质感 /
STRUCTURE
肌理面

BODY 坯色 /
WHITE 白

FACES 版面 /
6 RANDOM
6 随机面

P249

www.klaxslab.com

LIMPID GREEN

The surface of this material is both clear and rich, reminiscent of a delicate pink jade that is shrouded in a soft, ethereal mist. The starry diamond-like facets on the surface create a dynamic, shimmering effect, showcasing different postures and angles as light interacts with the material. Whether viewed in natural or artificial light, this material is sure to captivate and delight with its subtle yet striking beauty.

清江玉

表面清透丰润，犹如雾气环绕中的粉色翡翠，星钻质面提供动态闪耀瞬间，通过感受不同的光，展现不同的姿态。

MARBLE LOOK

大理石系列

X0126V1219YD

FORMAT
规格尺寸 /
600mm
1200mm

THICKNESS
厚度 /
9mm

SURFACE
表面质感 /
STRUCTURE
星钻面

BODY 坯色 /
WHITE 白

FACES 版面 /
6 RANDOM
6 随机面

MARBLE LOOK

大理石系列

X0126V1218YSR

FORMAT
规格尺寸 /
600mm
1200mm

THICKNESS
厚度 /
9mm

SURFACE
表面质感 /
STRUCTURE
肌理面

BODY 坯色 /
WHITE 白

FACES 版面 /
6 RANDOM
6 随机面

P250

www.klaxslab.com

BOHEMIA

Inspired by Taihu stone, this design has undergone artistic processing to create a new, natural yet abstract appearance. The lifelike texture conveys the essence of ink and brushstrokes found in traditional Chinese landscape paintings.

波西米亚

仿制太湖石的形神，经过艺术加工，形成既自然又抽象的全新面貌，逼真的触感更加其丹山墨水的设计传达。

P251

www.klaxslab.com

COROTANA WHITE

The champagne-colored surface is adorned with intersecting stone patterns, giving it a refined decorative quality that is not outdone by even the most famous marble patterns. The slightly mottled base color and clean lines add to its allure, making it a tasteful choice for any setting.

科罗塔那白

香槟色画幅上添加纵横交错的石材纹理，底色微醺，纹理简洁，带有不输知名大理石纹理的装饰性。

MARBLE LOOK

大理石系列

XO126V1223YS

FORMAT
规格尺寸 /
600mm
1200mm

THICKNESS
厚度 /
9mm

SURFACE
表面质感 /
STRUCTURE
肌理面

BODY 坯色 /
WHITE 白

FACES 版面 /
6 RANDOM
6 随机面

P252

www.klaxslab.com



P253

www.klaxslab.com

NAEVIA WHITE

The design of the board surface has been revitalized by drawing inspiration from plant fossils, deviating from the conventional marble patterns. The resulting decoration patterns offer a captivating depiction of the passage of time through a cross-sectional display.

纳维亚

抛弃传统大理石的经典图案，以植物化石为灵感，重新构建板面装饰图案，为我们呈现时间的剖面。

MARBLE LOOK

大理石系列

XO126V1224YS

FORMAT
规格尺寸 /
600mm
1200mm

THICKNESS
厚度 /
9mm

SURFACE
表面质感 /
STRUCTURE
肌理面

BODY 坯色 /
WHITE 白

FACES 版面 /
6 RANDOM
6 随机面

MARBLE LOOK

大理石系列

XO126V1225YN

FORMAT
规格尺寸 /
600mm
1200mm

THICKNESS
厚度 /
9mm

SURFACE
表面质感 /
STRUCTURE
肌理面

BODY 坯色 /
WHITE 白

FACES 版面 /
8 RANDOM
8 随机面

P254

www.klaxslab.com



KHALITE IVORY CHAKRA

The design draws inspiration from the shape and spirit of Taihu Stone and has been meticulously replicated and artistically processed to create a new, natural, and abstract appearance. The lifelike texture further enhances the design's essence of Dan mountain and ink painting, immersing the observer in an unparalleled sensory experience.

卡特浅灰

仿制太湖石的形神，经过艺术加工，形成既自然又抽象的全新面貌，逼真的触感更加形出丹山墨水的设计传达。

P255

www.klaxslab.com

BRECCIA SARDA GREY

Drawing inspiration from the texture of Sardinian gravel, this design features a gradual shift in brown hues that exudes a subtle sense of luxury. The smooth and uniquely textured surface, formed over time by the erosion of rivers and streams, is further enhanced by an omni-directional continuous pattern design to maximize its decorative effect, creating an unparalleled indoor landscape that cannot be replicated.

撒丁砾石

灵感来自于撒丁砾石纹，渐变棕色透出低调奢感，经由大江大河长期冲刷形成的圆润表面和独特纹理，再经由万向连纹设计形成最大化的装饰效果，形成一道不可复刻的室内风景。

MARBLE LOOK

大理石系列

X0126V1226YSR

FORMAT
规格尺寸 /
600mm
1200mm

THICKNESS
厚度 /
9mm

SURFACE
表面质感 /
STRUCTURE
肌理面

BODY 坯色 /
LIGHT GREY
浅灰

FACES 版面 /
4 RANDOM
4 随机面

MARBLE LOOK

大理石系列

X0126V1220YDP

FORMAT
规格尺寸 /
600mm
1200mm

THICKNESS
厚度 /
9mm

SURFACE
表面质感 /
DIGITAL
STRUCTURE
LAPPATO
星钻面

BODY 坯色 /
WHITE 白

FACES 版面 /
6 RANDOM
6 随机面

P256

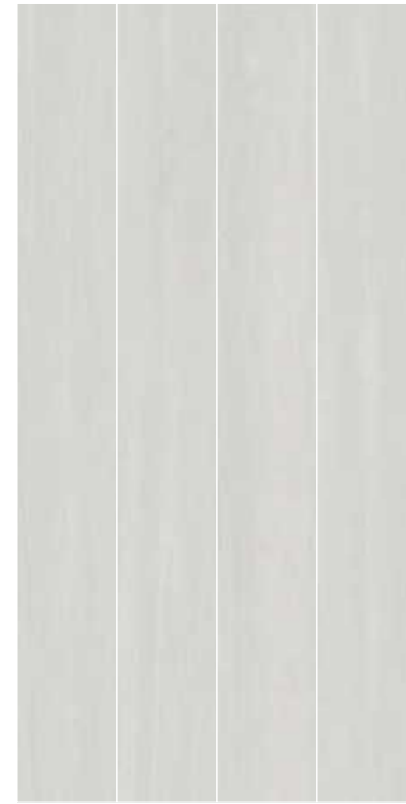
www.klaxslab.com

PULLOS

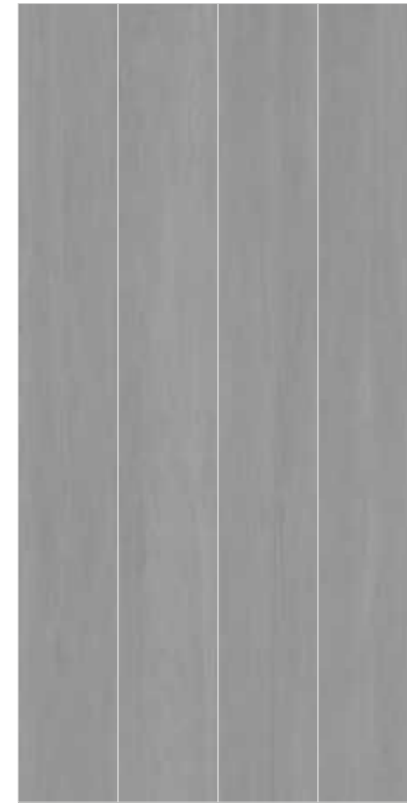
The base is skillfully crafted from a clear, translucent material that evokes the beauty of jade, setting the perfect foundation for a mesmerizing, uninterrupted display of undulating clouds and delicate water ripples. This intricate design creates a remarkable and authentic Eastern aesthetic that brings a sense of depth and character to the entire space, making it truly unique and unforgettable.

普洛斯

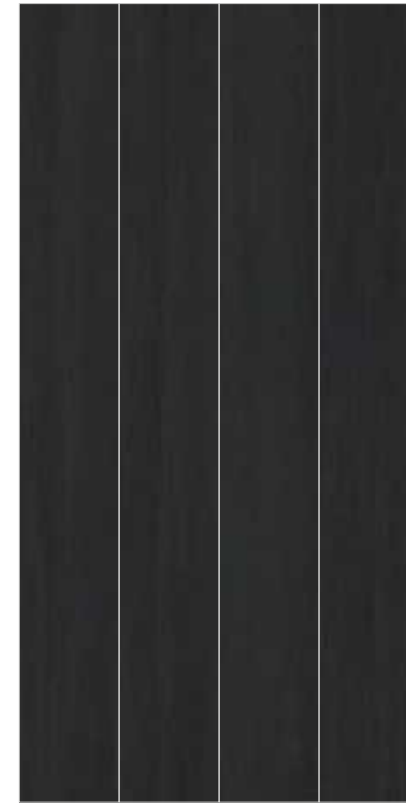
晶莹剔透的玉石质感为底，绵延起伏的云雾和似有似无的水波涟漪图案蜿蜒层叠，为空间带入独特的东方美学元素。



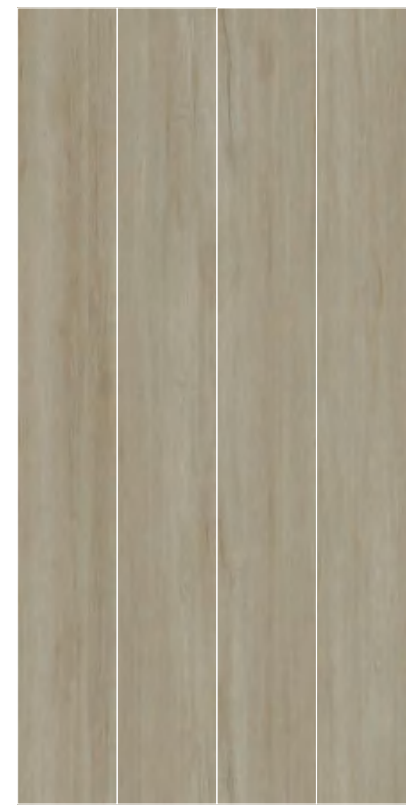
圣保罗橡木
SAINT PAUL
OAK
X1822V1258YSN



圣保罗橡木
SAINT PAUL
OAK
X1822V1259YSN



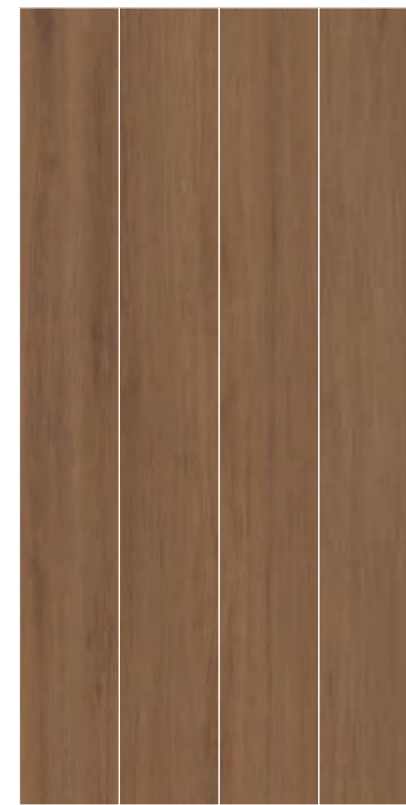
圣保罗橡木
SAINT PAUL
OAK
X1822V1260YSN



泽西胡桃木
JERSEY
WALNUT
X1822V1261YSN



泽西胡桃木
JERSEY
WALNUT
X1822V1262YSN



泽西胡桃木
JERSEY
WALNUT
X1822V1263YSN

P265

www.klaxslab.com

JERSEY WALNUT

Inspired by the natural beauty of walnut wood, this product boasts a realistic and refined texture that adds a touch of nature to any indoor space. The light yellow wood grain design creates a sense of brightness and openness, lending an expansive quality to the area. This carefully crafted aesthetic captures the essence of nature and brings it indoors, creating a warm and inviting atmosphere.

泽西胡桃木

胡桃木表现特征为原型，触感真实细腻，把自然带入室内空间，浅黄色木纹设计，轻松明亮，放大视野。

WOOD LOOK

木纹系列

X1822V1261YSN

FORMAT
规格尺寸 /
225mm
1800mm

THICKNESS
厚度 /
9mm

SURFACE
表面质感 /
REALISTIC MATT
肌理面

BODY 坯色 /
LIGHT GREY
浅灰

FACES 版面 /
16 RANDOM
16 随机面

WOOD LOOK

木纹系列

X1822V1262YSN

FORMAT
规格尺寸 /
225mm
1800mm

THICKNESS
厚度 /
9mm

SURFACE
表面质感 /
REALISTIC MATT
肌理面

BODY 坯色 /
LIGHT GREY
浅灰

FACES 版面 /
16 RANDOM
16 随机面

P266

www.klaxslab.com

JERSEY WALNUT

Drawing inspiration from the beauty of walnut wood, this product boasts a realistic and finely detailed texture that brings the outdoors into any indoor space. The versatile and harmonious medium yellow wood grain design represents a modern classic, seamlessly blending with a variety of interior styles. Its carefully crafted aesthetic captures the timeless essence of nature while providing a fresh and contemporary feel, making it an excellent choice for those seeking a stylish and refined look.

泽西胡桃木

胡桃木表现特征为原型，触感真实细腻，把自然带入室内空间，中黄木纹设计，和谐百搭，现代经典。

P267

www.klaxslab.com

JERSEY WALNUT

Taking cues from the natural beauty of walnut wood, this product boasts a finely detailed and realistic texture that brings a touch of nature into any indoor space. The honey-colored wood grain design adds a vintage charm to the overall aesthetic, evoking a sense of antique style and character. This unique combination of organic texture and antique appeal creates a warm and inviting atmosphere that is both stylish and timeless, making it a versatile and attractive option for any interior space.

泽西胡桃木

胡桃木表现特征为原型，触感真实细腻，把自然带入室内空间，蜂蜜色木纹设计，立显中古格调。

WOOD LOOK

木纹系列

X1822V1263YSN

FORMAT
规格尺寸 /
225mm
1800mm

THICKNESS
厚度 /
9mm

SURFACE
表面质感 /
REALISTIC
MATT
肌理面

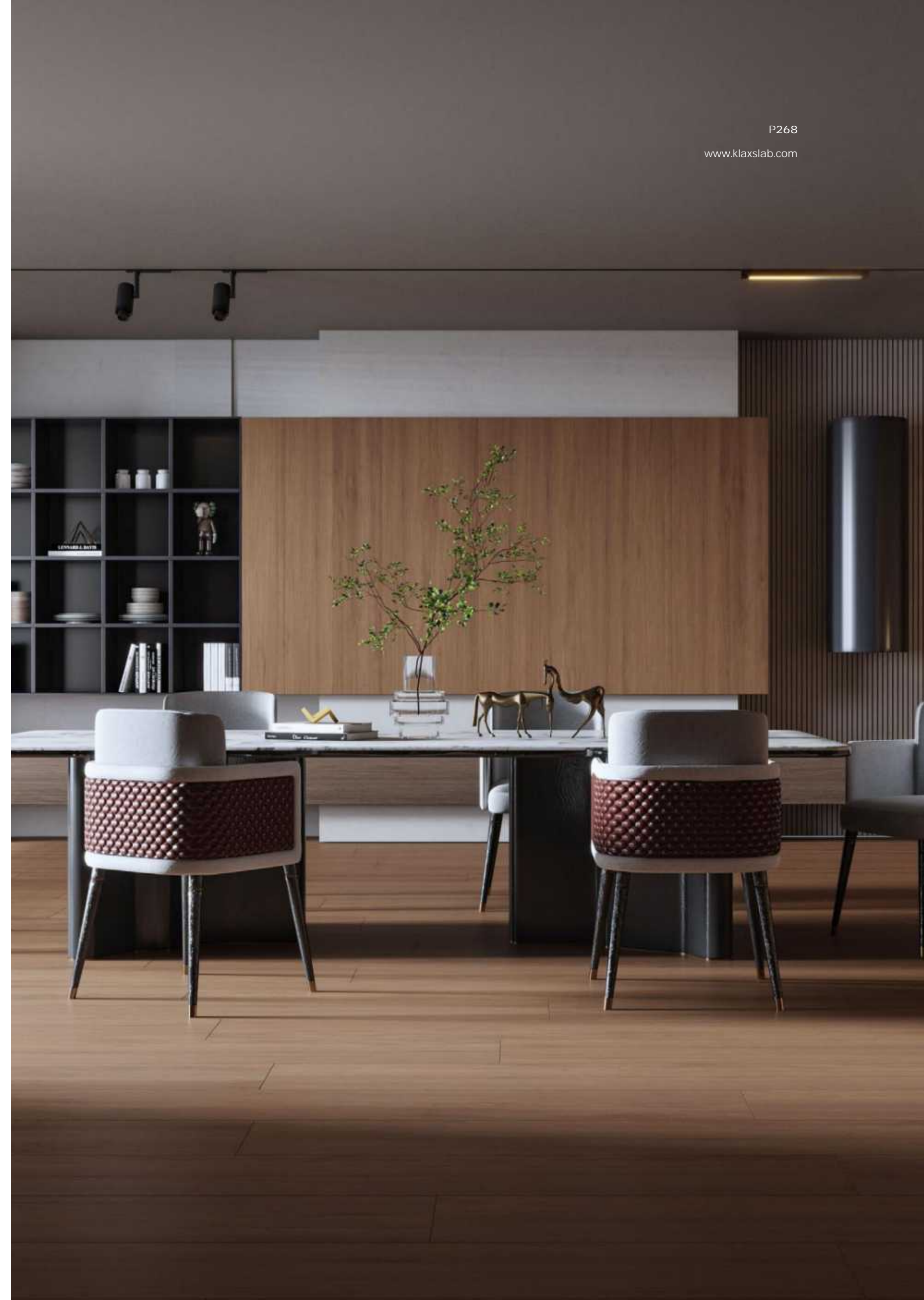
BODY 坯色 /
LIGHT GREY
浅灰

FACES 版面 /
16 RANDOM
16 随机面



P268

www.klaxslab.com





**JERSEY
WALNUT**

泽西胡桃木



**WOOD
LOOK**

木纹系列

X1822V1263YSN

FORMAT
规格尺寸 /
225mm
1800mm

THICKNESS
厚度 /
9mm

SURFACE
表面质感 /
REALISTIC
MATT
肌理面

BODY 坯色 /
LIGHT GREY
浅灰

FACES 版面 /
16 RANDOM
16 随机面